

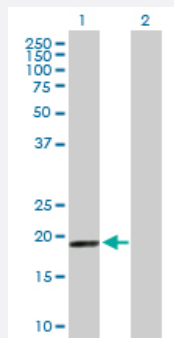
MaxPab®

# MRPS28 purified MaxPab mouse polyclonal antibody (B01P)

Catalog # H00028957-B01P

Size 50 ug

## Applications



### Western Blot (Transfected lysate)

Western Blot analysis of MRPS28 expression in transfected 293T cell line ([H00028957-T03](#)) by MRPS28 MaxPab polyclonal antibody.

Lane 1: MRPS28 transfected lysate(20.57 KDa).

Lane 2: Non-transfected lysate.

## Specification

Product Description	Mouse polyclonal antibody raised against a full-length human MRPS28 protein.
Immunogen	MRPS28 (NP_054737.1, 1 a.a. ~ 187 a.a) full-length human protein.
Sequence	MAALCRTRAVAAESHFLRVFLFFRPFRGVGTESGSESGSSNAKEPKTRAGGFASALERHSELLQ KVEPLQKGSPKNVESFASMLRHSPLTQMGPAKDKLVIGRIFHIVENDLYIDFGGKFHCVCRRPEV DGEKYQKGTRVRLRLLDLELTSRFLGATDTTVLEANAVLLGIQESKDSRSKEEHHEK
Host	Mouse
Reactivity	Human
Interspecies Antigen Sequence	Mouse (73)
Quality Control Testing	Antibody reactive against mammalian transfected lysate.
Storage Buffer	In 1x PBS, pH 7.4
Storage Instruction	Store at -20°C or lower. Aliquot to avoid repeated freezing and thawing.

## Applications

- Western Blot (Transfected lysate)

Western Blot analysis of MRPS28 expression in transfected 293T cell line ([H00028957-T03](#)) by MRPS28 MaxPab polyclonal antibody.

Lane 1: MRPS28 transfected lysate(20.57 KDa).

Lane 2: Non-transfected lysate.

[Protocol Download](#)

## Gene Info — MRPS28

Entrez GeneID	<a href="#">28957</a>
---------------	-----------------------

GeneBank Accession#	<a href="#">NM_014018</a>
---------------------	---------------------------

Protein Accession#	<a href="#">NP_054737.1</a>
--------------------	-----------------------------

Gene Name	MRPS28
-----------	--------

Gene Alias	FLJ22853, HSPC007, MRP-S28, MRP-S35, MRPS35
------------	---

Gene Description	mitochondrial ribosomal protein S28
------------------	-------------------------------------

Gene Ontology	<a href="#">Hyperlink</a>
---------------	---------------------------

Gene Summary	Mammalian mitochondrial ribosomal proteins are encoded by nuclear genes and help in protein synthesis within the mitochondrion. Mitochondrial ribosomes (mitoribosomes) consist of a small 28 S subunit and a large 39S subunit. They have an estimated 75% protein to rRNA composition compared to prokaryotic ribosomes, where this ratio is reversed. Another difference between mammalian mitoribosomes and prokaryotic ribosomes is that the latter contain a 5S rRNA. Among different species, the proteins comprising the mitoribosome differ greatly in sequence, and sometimes in biochemical properties, which prevents easy recognition by sequence homology. This gene encodes a 28S subunit protein that has been called mitochondrial ribosomal protein S35 in the literature. [provided by RefSeq]
--------------	---

Other Designations	mitochondrial 28S ribosomal protein S35
--------------------	---