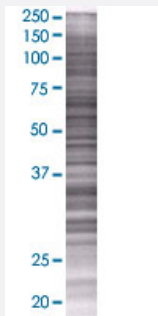


REM1 293T Cell Transient Overexpression Lysate(Denatured)

Catalog # H00028954-T01

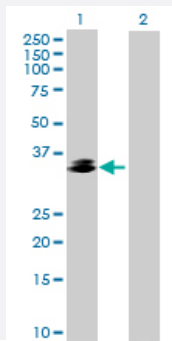
Size 100 uL

Applications



SDS-PAGE Gel

REM1 transfected lysate.



Western Blot

Lane 1: REM1 transfected lysate (32.89 KDa)

Lane 2: Non-transfected lysate.

Specification

Transfected Cell Line	293T
Plasmid	pCMV-REM1 full-length
Host	Human
Theoretical MW (kDa)	32.89
Interspecies Antigen Sequence	Mouse (88); Rat (89)

Quality Control Testing

Transient overexpression cell lysate was tested with Anti-REM1 antibody ([H00028954-B01](#)) by Western Blots.
SDS-PAGE Gel
REM1 transfected lysate.
Western Blot
Lane 1: REM1 transfected lysate (32.89 KDa)
Lane 2: Non-transfected lysate.

Storage Buffer

1X Sample Buffer (50 mM Tris-HCl, 2% SDS, 10% glycerol, 300 mM 2-mercaptoethanol, 0.01% Bromophenol blue)

Storage Instruction

Store at -80°C. Aliquot to avoid repeated freezing and thawing.

Applications

- Western Blot

Gene Info — REM1

Entrez GeneID

[28954](#)

GeneBank Accession#

[NM_014012](#)

Protein Accession#

[NP_054731](#)

Gene Name

REM1

Gene Alias

GD:REM, GES, MGC48669, REM

Gene Description

RAS (RAD and GEM)-like GTP-binding 1

Omim ID

[610388](#)

Gene Ontology

[Hyperlink](#)

Gene Summary

The protein encoded by this gene is a GTPase and member of the RAS-like GTP-binding protein family. The encoded protein is expressed in endothelial cells, where it promotes reorganization of the actin cytoskeleton and morphological changes in the cells. [provided by RefSeq]

Other Designations

GTPase GES|OTTHUMP00000030521|RAS-like GTP-binding protein REM