

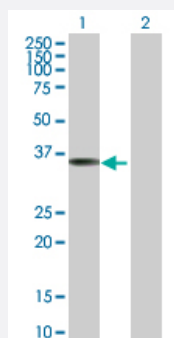
MaxPab®

## REM1 purified MaxPab mouse polyclonal antibody (B01P)

Catalog # H00028954-B01P

Size 50 ug

### Applications

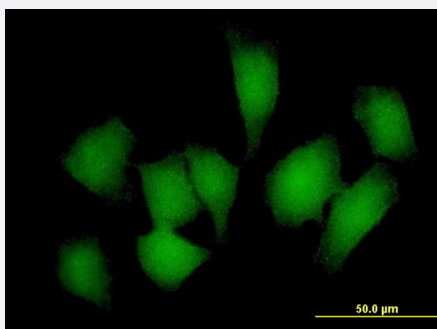


#### Western Blot (Transfected lysate)

Western Blot analysis of REM1 expression in transfected 293T cell line ([H00028954-T01](#)) by REM1 MaxPab polyclonal antibody.

Lane 1: REM1 transfected lysate(32.78 KDa).

Lane 2: Non-transfected lysate.



#### Immunofluorescence

Immunofluorescence of purified MaxPab antibody to REM1 on HeLa cell. [antibody concentration 10 ug/ml]

### Specification

#### Product Description

Mouse polyclonal antibody raised against a full-length human REM1 protein.

#### Immunogen

REM1 (NP\_054731.2, 1 a.a. ~ 298 a.a) full-length human protein.

#### Sequence

MTLNTEQEAKTPLHRRASTPLPLSPRGHQPGRLSTVPSTQSQHPRLGQSASLNPPTQKPSPAPD  
DWSSESSDSEGSWEALYRVVLLGDPGVGKTSLASLFAGKQERDLHEQLGEDVYERTLTVDGED  
TTLVVVDTWAEKLDKSWSQESCLQGGSAYVIVYSIADRGSFESASELRIQLRRTHQADHVPILV  
GNKADLARCREVSVEEGRACAVVFDCKFIETSATLQHNVAELFEGVVRQLRLRRRDSAAKEPPA  
PRRPASLAQRARRFLARLTARSARRRALKARSKSCHNLAVL

#### Host

Mouse

Reactivity	Human
Interspecies Antigen Sequence	Mouse (88); Rat (89)
Quality Control Testing	Antibody reactive against mammalian transfected lysate.
Storage Buffer	In 1x PBS, pH 7.4
Storage Instruction	Store at -20°C or lower. Aliquot to avoid repeated freezing and thawing.

## Applications

- Western Blot (Transfected lysate)

Western Blot analysis of REM1 expression in transfected 293T cell line ([H00028954-T01](#)) by REM1 MaxPab polyclonal antibody.

Lane 1: REM1 transfected lysate(32.78 KDa).

Lane 2: Non-transfected lysate.

[Protocol Download](#)

- Immunofluorescence

Immunofluorescence of purified MaxPab antibody to REM1 on HeLa cell. [antibody concentration 10 ug/ml]

## Gene Info — REM1

Entrez GeneID	<a href="#">28954</a>
GeneBank Accession#	<a href="#">NM_014012</a>
Protein Accession#	<a href="#">NP_054731.2</a>
Gene Name	REM1
Gene Alias	GD:REM, GES, MGC48669, REM
Gene Description	RAS (RAD and GEM)-like GTP-binding 1
Omim ID	<a href="#">610388</a>
Gene Ontology	<a href="#">Hyperlink</a>
Gene Summary	The protein encoded by this gene is a GTPase and member of the RAS-like GTP-binding protein family. The encoded protein is expressed in endothelial cells, where it promotes reorganization of the actin cytoskeleton and morphological changes in the cells. [provided by RefSeq]

**Other Designations**GTPase GES|OTTHUMP00000030521|RAS-like GTP-binding protein REM

---