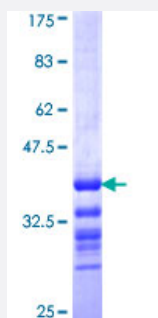


TRIB2 (Human) Recombinant Protein (Q01)

Catalog # H00028951-Q01

Size 25 ug, 10 ug

Applications



Specification

Product Description	Human TRIB2 partial ORF (NP_067675, 254 a.a. - 343 a.a.) recombinant protein with GST-tag at N-terminal.
Sequence	FHDIEPSSLFSKIRRGQFNIPETLSPKAKCLIRSILRREPSERLTSQEILDHPWFSTDFSVSNSAYGA KEVSDQLVPDVNMEENLDPFFN
Host	Wheat Germ (in vitro)
Theoretical MW (kDa)	35.64
Interspecies Antigen Sequence	Mouse (98)
Preparation Method	in vitro wheat germ expression system
Purification	Glutathione Sepharose 4 Fast Flow
Quality Control Testing	12.5% SDS-PAGE Stained with Coomassie Blue.
Storage Buffer	50 mM Tris-HCl, 10 mM reduced Glutathione, pH=8.0 in the elution buffer.
Storage Instruction	Store at -80°C. Aliquot to avoid repeated freezing and thawing.
Note	Best use within three months from the date of receipt of this protein.

Applications

- Enzyme-linked Immunoabsorbent Assay
- Western Blot (Recombinant protein)
- Antibody Production
- Protein Array

Gene Info — TRIB2

Entrez GeneID [28951](#)

GeneBank Accession# [NM_021643](#)

Protein Accession# [NP_067675](#)

Gene Name TRIB2

Gene Alias C5FW, GS3955, TRB2

Gene Description tribbles homolog 2 (Drosophila)

Omim ID [609462](#)

Gene Ontology [Hyperlink](#)

Gene Summary This gene encodes one of three members of the Tribbles family. The Tribbles members share a T rib domain, which is homologous to protein serine-threonine kinases, but lacks the active site lysine and probably lacks a catalytic function. The Tribbles proteins interact and modulate the activity of signal transduction pathways in a number of physiological and pathological processes. This Tribbles member induces apoptosis of cells mainly of the hematopoietic origin. It has been identified as a protein up-regulated by inflammatory stimuli in myeloid (THP-1) cells, and also as an oncogene that inactivates the transcription factor C/EBPalpha (CCAAT/enhancer-binding protein alpha) and causes acute myelogenous leukemia. Alternatively spliced transcript variants have been found for this gene. [provided by RefSeq]

Other Designations tribbles homolog 2

Disease

- [Alcoholism](#)

- [Conduct Disorder](#)