

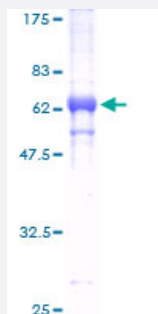
Full-Length

TRIB2 (Human) Recombinant Protein (P01)

Catalog # H00028951-P01

Size 25 ug, 10 ug

Applications



Specification

Product Description

Human TRIB2 full-length ORF (AAH02637, 1 a.a. - 343 a.a.) recombinant protein with GST-tag at N-terminal.

Sequence

MNIHRSTPITARYGRSRNKTQDFEELSSIRSAEPSQSFSPNLGSPSPPETPNLSHCVSCIGKYLLE
PLEGDHVFRAVHLHSGEELVCKVFDISCYQESLAPCFCLSAHSNNQITEILGETKAYVFFERSYG
DMHSFVRTCKKLREEEAARLFYQIASAVAHCHDGGVLRLDLKLRKFIFKDEERTRVKLESLEDAYI
LRGDDDSLSDKHGCPAYVSPEILNTSGSYSGKAADVWSLGVMLYTMLVGRYPFHDIEPSSLFSKI
RRGQFNIPETLSPKAKCLIRSILRREPSERLTSQEILDHPWFSTDFSVSNSAYGAKEVSDQLVPDV
NMEENLDPFFN

Host

Wheat Germ (in vitro)

Theoretical MW (kDa)

63.47

Interspecies Antigen Sequence

Mouse (98)

Preparation Method

[in vitro wheat germ expression system](#)

Purification

Glutathione Sepharose 4 Fast Flow

Quality Control Testing

12.5% SDS-PAGE Stained with Coomassie Blue.

Storage Buffer

50 mM Tris-HCl, 10 mM reduced Glutathione, pH=8.0 in the elution buffer.

Storage Instruction

Store at -80°C. Aliquot to avoid repeated freezing and thawing.

Note

Best use within three months from the date of receipt of this protein.

Applications

- Enzyme-linked Immunoabsorbent Assay
- Western Blot (Recombinant protein)
- Antibody Production
- Protein Array

Gene Info — TRIB2

Entrez GeneID[28951](#)**GeneBank Accession#**[BC002637](#)**Protein Accession#**[AAH02637](#)**Gene Name**

TRIB2

Gene Alias

C5FW, GS3955, TRB2

Gene Description

tribbles homolog 2 (Drosophila)

Omim ID[609462](#)**Gene Ontology**[Hyperlink](#)**Gene Summary**

This gene encodes one of three members of the Tribbles family. The Tribbles members share a Trib domain, which is homologous to protein serine-threonine kinases, but lacks the active site lysine and probably lacks a catalytic function. The Tribbles proteins interact and modulate the activity of signal transduction pathways in a number of physiological and pathological processes. This Tribbles member induces apoptosis of cells mainly of the hematopoietic origin. It has been identified as a protein up-regulated by inflammatory stimuli in myeloid (THP-1) cells, and also as an oncogene that inactivates the transcription factor C/EBPalpha (CCAAT/enhancer-binding protein alpha) and causes acute myelogenous leukemia. Alternatively spliced transcript variants have been found for this gene. [provided by RefSeq]

Other Designations

tribbles homolog 2

Publication Reference

- [Reciprocal regulation between O-GlcNAcylation and tribbles pseudokinase 2 \(TRIB2\) maintains transformative phenotypes in liver cancer cells.](#)

Yao B, Xub Y, Wang J, Qiaoe Y, Zhangf Y, Zhang X, Chenc Y, Wu Q, Zhaoc Y, Zhuc G, Sunc F, Li Z, Yuana H.

Cellular Signalling 2016 Nov; 28(11):1703.

Application: Incubated, Recombinant protein

- [Impaired phosphorylation and ubiquitination by P70 S6 kinase \(P70S6K\) and Smad ubiquitination regulatory factor 1 \(Smurf1\) promotes Tribbles homolog 2 \(TRIB2\) stability and carcinogenic property in liver cancer.](#)

Wang J, Zhang Y, Weng W, Qiao Y, Ma L, Xiao W, Yu Y, Pan Q, Sun F.

The Journal of Biological Chemistry 2013 Nov; 288(47):33667.

Application: IP, Human, Liver cancer

Disease

- [Alcoholism](#)
- [Conduct Disorder](#)