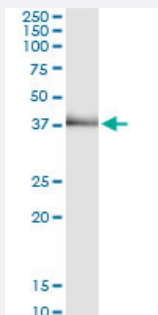


TRIB2 monoclonal antibody (M11), clone 1D11

Catalog # H00028951-M11

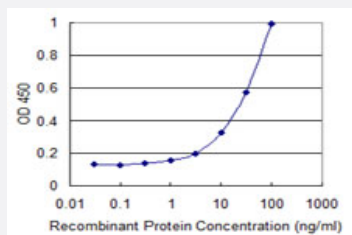
Size 100 ug

Applications



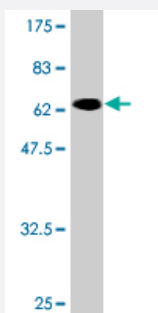
Immunoprecipitation

Immunoprecipitation of TRIB2 transfected lysate using anti-TRIB2 monoclonal antibody and Protein A Magnetic Bead, and immunoblotted with TRIB2 MaxPab rabbit polyclonal antibody.



Sandwich ELISA (Recombinant protein)

Detection limit for recombinant GST tagged TRIB2 is 1 ng/ml as a capture antibody.



Western Blot detection against Immunogen (63.47 KDa) .

Specification

Product Description

Mouse monoclonal antibody raised against a full-length recombinant TRIB2.

Immunogen	TRIB2 (AAH02637, 1 a.a. ~ 343 a.a) full-length recombinant protein with GST tag. MW of the GST tag alone is 26 KDa.
Sequence	MNIHRSTPITIARYGRSRNKTQDFEELSSIRSAEPSQSFSPNLGSPSPPETPNLSHCVSCIGKYLLE PLEGDHVFRAVHLHSGEELVCKVFDISCYQESLAPCFCLSAHSNINQITEILGETKAYVFFERSYG DMHSFVRTCKKLREEEAARLFYQIASAVAHCHDGGLVLRDLKLRKFIFKDEERTRVKLESLEDAYI LRGDDDSLSDKHGCPAYVSPEILNTSGSYSGKAADVWSLGVMLYTMLVGRYPFHDIEPSSLFSKI RRGQFNIPETLSPKAKCLIRSILRREPSERLTSQEILDHPWFSTDFSVSNSAYGAKEVSDQLVPDV NMEENLDPFFN
Host	Mouse
Reactivity	Human
Interspecies Antigen Sequence	Mouse (98)
Isotype	IgG2a Kappa
Quality Control Testing	Antibody Reactive Against Recombinant Protein. Western Blot detection against Immunogen (63.47 KDa) .
Storage Buffer	In 1x PBS, pH 7.4
Storage Instruction	Store at -20°C or lower. Aliquot to avoid repeated freezing and thawing.

Applications

- Western Blot (Recombinant protein)

[Protocol Download](#)

- Immunoprecipitation

Immunoprecipitation of TRIB2 transfected lysate using anti-TRIB2 monoclonal antibody and Protein A Magnetic Bead, and immunoblotted with TRIB2 MaxPab rabbit polyclonal antibody.

[Protocol Download](#)

- Sandwich ELISA (Recombinant protein)

Detection limit for recombinant GST tagged TRIB2 is 1 ng/ml as a capture antibody.

[Protocol Download](#)

- ELISA

Gene Info — TRIB2

Entrez GeneID [28951](#)

GeneBank Accession# [BC002637](#)

Protein Accession# [AAH02637](#)

Gene Name TRIB2

Gene Alias C5FW, GS3955, TRB2

Gene Description tribbles homolog 2 (Drosophila)

Omim ID [609462](#)

Gene Ontology [Hyperlink](#)

Gene Summary This gene encodes one of three members of the Tribbles family. The Tribbles members share a Trib domain, which is homologous to protein serine-threonine kinases, but lacks the active site lysine and probably lacks a catalytic function. The Tribbles proteins interact and modulate the activity of signal transduction pathways in a number of physiological and pathological processes. This Tribbles member induces apoptosis of cells mainly of the hematopoietic origin. It has been identified as a protein up-regulated by inflammatory stimuli in myeloid (THP-1) cells, and also as an oncogene that inactivates the transcription factor C/EBPalpha (CCAAT/enhancer-binding protein alpha) and causes acute myelogenous leukemia. Alternatively spliced transcript variants have been found for this gene. [provided by RefSeq]

Other Designations tribbles homolog 2

Disease

- [Alcoholism](#)
- [Conduct Disorder](#)