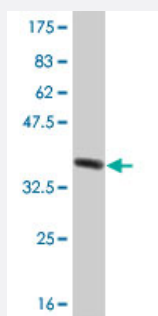


# TRIB2 polyclonal antibody (A01)

Catalog # H00028951-A01

Size 50 uL

## Applications



Western Blot detection against Immunogen (36.01 KDa) .

## Specification

<b>Product Description</b>	Mouse polyclonal antibody raised against a partial recombinant TRIB2.
<b>Immunogen</b>	TRIB2 (NP_067675, 254 a.a. ~ 343 a.a) partial recombinant protein with GST tag.
<b>Sequence</b>	FHDIEPSSLFSKIRRGQFNIPETLSPKAKCLIRSILRREPSERLTSQEILDHPWFSTDFSVSNSAYGA KEVSDQLVPDVNMEENLDPFFN
<b>Host</b>	Mouse
<b>Reactivity</b>	Human
<b>Interspecies Antigen Sequence</b>	Mouse (98)
<b>Quality Control Testing</b>	Antibody Reactive Against Recombinant Protein. Western Blot detection against Immunogen (36.01 KDa) .
<b>Storage Buffer</b>	50 % glycerol
<b>Storage Instruction</b>	Store at -20°C or lower. Aliquot to avoid repeated freezing and thawing.

## Applications

- Western Blot (Recombinant protein)

[Protocol Download](#)

- ELISA

## Gene Info — TRIB2

Entrez GeneID [28951](#)

GeneBank Accession# [NM\\_021643](#)

Protein Accession# [NP\\_067675](#)

Gene Name TRIB2

Gene Alias C5FW, GS3955, TRB2

Gene Description tribbles homolog 2 (Drosophila)

Omim ID [609462](#)

Gene Ontology [Hyperlink](#)

**Gene Summary**

This gene encodes one of three members of the Tribbles family. The Tribbles members share a T rib domain, which is homologous to protein serine-threonine kinases, but lacks the active site lysine and probably lacks a catalytic function. The Tribbles proteins interact and modulate the activity of signal transduction pathways in a number of physiological and pathological processes. This Tribbles member induces apoptosis of cells mainly of the hematopoietic origin. It has been identified as a protein up-regulated by inflammatory stimuli in myeloid (THP-1) cells, and also as an oncogene that inactivates the transcription factor C/EBPalpha (CCAAT/enhancer-binding protein alpha) and causes acute myelogenous leukemia. Alternatively spliced transcript variants have been found for this gene. [provided by RefSeq]

**Other Designations** tribbles homolog 2

## Disease

- [Alcoholism](#)
- [Conduct Disorder](#)