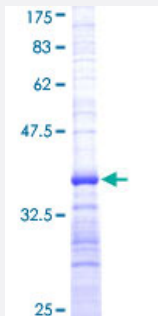


DLL1 (Human) Recombinant Protein (Q01)

Catalog # H00028514-Q01

Size 25 ug, 10 ug

Applications



Specification

Product Description	Human DLL1 partial ORF (NP_005609, 18 a.a. - 109 a.a.) recombinant protein with GST-tag at N-terminal.
Sequence	QVWSSGVFELKLQEFVNKKGLLGNRNCCRGGAGPPPCACRTFFRVCLKHYQASVSPEPPCTYG SAVTPVLGVDSFSLPDGGGADSAFSNPIR
Host	Wheat Germ (in vitro)
Theoretical MW (kDa)	35.86
Interspecies Antigen Sequence	Mouse (88); Rat (88)
Preparation Method	in vitro wheat germ expression system
Purification	Glutathione Sepharose 4 Fast Flow
Quality Control Testing	12.5% SDS-PAGE Stained with Coomassie Blue.
Storage Buffer	50 mM Tris-HCl, 10 mM reduced Glutathione, pH=8.0 in the elution buffer.
Storage Instruction	Store at -80°C. Aliquot to avoid repeated freezing and thawing.
Note	Best use within three months from the date of receipt of this protein.

Applications

- Enzyme-linked Immunoabsorbent Assay
- Western Blot (Recombinant protein)
- Antibody Production
- Protein Array

Gene Info — DLL1

Entrez GeneID	28514
GeneBank Accession#	NM_005618
Protein Accession#	NP_005609
Gene Name	DLL1
Gene Alias	DELTA1, DL1, Delta
Gene Description	delta-like 1 (Drosophila)
Omim ID	606582
Gene Ontology	Hyperlink
Gene Summary	DLL1 is a human homolog of the Notch Delta ligand and is a member of the delta/serrate/jagged family. It plays a role in mediating cell fate decisions during hematopoiesis. It may play a role in cell-to-cell communication. [provided by RefSeq]
Other Designations	OTTHUMP00000017690 delta-like 1 delta-like 1 protein

Pathway

- [Notch signaling pathway](#)

Disease

- [Alzheimer disease](#)