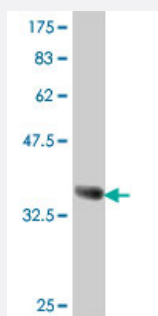


DLL1 polyclonal antibody (A01)

Catalog # H00028514-A01

Size 50 uL

Applications



Western Blot detection against Immunogen (36.23 KDa) .

Specification

Product Description	Mouse polyclonal antibody raised against a partial recombinant DLL1.
Immunogen	DLL1 (NP_005609, 18 a.a. ~ 109 a.a) partial recombinant protein with GST tag.
Sequence	QVWSSGVFELKLQEFVNKKGLLGNRNCCRGGAGPPPCACRTFFRVCLKHYQASVSPEPPCTYG SAVTPVLGVDSFSLPDGGGADSAFSNPIR
Host	Mouse
Reactivity	Human
Interspecies Antigen Sequence	Mouse (88); Rat (88)
Quality Control Testing	Antibody Reactive Against Recombinant Protein. Western Blot detection against Immunogen (36.23 KDa) .
Storage Buffer	50 % glycerol
Storage Instruction	Store at -20°C or lower. Aliquot to avoid repeated freezing and thawing.

Applications

- Western Blot (Recombinant protein)

[Protocol Download](#)

- ELISA

Gene Info — DLL1

Entrez GeneID [28514](#)

GeneBank Accession# [NM_005618](#)

Protein Accession# [NP_005609](#)

Gene Name DLL1

Gene Alias DELTA1, DL1, Delta

Gene Description delta-like 1 (Drosophila)

Omim ID [606582](#)

Gene Ontology [Hyperlink](#)

Gene Summary DLL1 is a human homolog of the Notch Delta ligand and is a member of the delta/serrate/jagged family. It plays a role in mediating cell fate decisions during hematopoiesis. It may play a role in cell-to-cell communication. [provided by RefSeq]

Other Designations OTTHUMP00000017690|delta-like 1|delta-like 1 protein

Pathway

- [Notch signaling pathway](#)

Disease

- [Alzheimer disease](#)