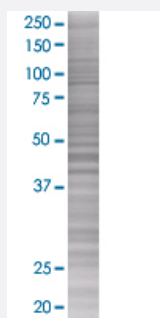


PPP2R3B 293T Cell Transient Overexpression Lysate(Denatured)

Catalog # H00028227-T02

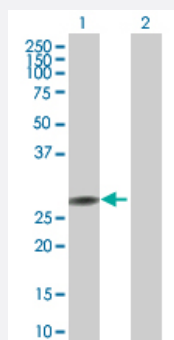
Size 100 uL

Applications



SDS-PAGE Gel

PPP2R3B transfected lysate.



Western Blot

Lane 1: PPP2R3B transfected lysate (19.47 KDa)

Lane 2: Non-transfected lysate.

Specification

Transfected Cell Line 293T

Plasmid pCMV-PPP2R3B full-length

Host Human

Theoretical MW (kDa) 19.47

Quality Control Testing Transient overexpression cell lysate was tested with Anti-PPP2R3B antibody ([H00028227-B02](#)) by Western Blots.
 SDS-PAGE Gel
 PPP2R3B transfected lysate.
 Western Blot
 Lane 1: PPP2R3B transfected lysate (19.47 KDa)
 Lane 2: Non-transfected lysate.

Storage Buffer	1X Sample Buffer (50 mM Tris-HCl, 2% SDS, 10% glycerol, 300 mM 2-mercaptoethanol, 0.01% Bromophenol blue)
Storage Instruction	Store at -80°C. Aliquot to avoid repeated freezing and thawing.

Applications

- Western Blot

Gene Info — PPP2R3B

Entrez GeneID	28227
GeneBank Accession#	NM_199326
Protein Accession#	NP_955358
Gene Name	PPP2R3B
Gene Alias	NY-REN-8, PPP2R3L, PPP2R3LY, PR48
Gene Description	protein phosphatase 2 (formerly 2A), regulatory subunit B", beta
Omim ID	300339
Gene Ontology	Hyperlink

Gene Summary	Protein phosphatase 2 (formerly named type 2A) is one of the four major Ser/Thr phosphatases and is implicated in the negative control of cell growth and division. Protein phosphatase 2 holoenzymes are heterotrimeric proteins composed of a structural subunit A, a catalytic subunit C, and a regulatory subunit B. The regulatory subunit is encoded by a diverse set of genes that have been grouped into the B/PR55, B'/PR61, and B"/PR72 families. These different regulatory subunits confer distinct enzymatic specificities and intracellular localizations to the holoenzyme. The product of this gene belongs to the B" family. The B" family has been further divided into subfamilies. The product of this gene belongs to the beta subfamily of regulatory subunit B". Alternative splicing results in multiple transcript variants encoding different isoforms. [provided by RefSeq]
--------------	--

Other Designations	NY-REN-8 antigen OTTHUMP00000022820 PP2A B" subunit PR48 PP2A, subunit B, PR48 isoform protein phosphatase 2, regulatory subunit B", beta serine/threonine protein phosphatase 2A, 48kDa regulatory subunit B
--------------------	---