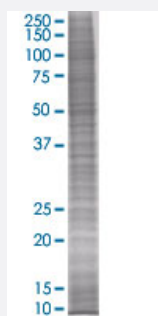


# PPP2R3B 293T Cell Transient Overexpression Lysate(Denatured)

Catalog # H00028227-T01

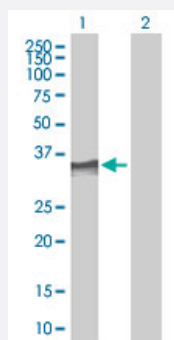
Size 100 uL

## Applications



### SDS-PAGE Gel

PPP2R3B transfected lysate



### Western Blot

Lane 1: PPP2R3B transfected lysate ( 24.86 KDa).

Lane 2: Non-transfected lysate.

## Specification

### Product Description

Transfected Cell Line	293T
Plasmid	pCMV-PR48 full-length
Host	Human
Theoretical MW (kDa)	24.86

**Quality Control Testing**

Transient overexpression cell lysate was tested with Anti-PR48 antibody ([H00028227-B01](#)) by Western Blots.  
SDS-PAGE Gel  
PPP2R3B transfected lysate  
Western Blot  
Lane 1: PPP2R3B transfected lysate ( 24.86 KDa).  
Lane 2: Non-transfected lysate.

**Storage Buffer**

1X Sample Buffer (50 mM Tris-HCl, 2% SDS, 10% glycerol, 300 mM 2-mercaptoethanol, 0.01% Bromophenol blue)

**Storage Instruction**

Store at -80°C. Aliquot to avoid repeated freezing and thawing.

## Applications

- Western Blot

## Gene Info — PPP2R3B

**Entrez GeneID**[28227](#)**GeneBank Accession#**[BC011180](#)**Protein Accession#**[AAH11180](#)**Gene Name**

PPP2R3B

**Gene Alias**

NY-REN-8, PPP2R3L, PPP2R3LY, PR48

**Gene Description**

protein phosphatase 2 (formerly 2A), regulatory subunit B", beta

**Omim ID**[300339](#)**Gene Ontology**[Hyperlink](#)**Gene Summary**

Protein phosphatase 2 (formerly named type 2A) is one of the four major Ser/Thr phosphatases and is implicated in the negative control of cell growth and division. Protein phosphatase 2 holoenzymes are heterotrimeric proteins composed of a structural subunit A, a catalytic subunit C, and a regulatory subunit B. The regulatory subunit is encoded by a diverse set of genes that have been grouped into the B/PR55, B'/PR61, and B''/PR72 families. These different regulatory subunits confer distinct enzymatic specificities and intracellular localizations to the holoenzyme. The product of this gene belongs to the B'' family. The B'' family has been further divided into subfamilies. The product of this gene belongs to the beta subfamily of regulatory subunit B''. Alternative splicing results in multiple transcript variants encoding different isoforms. [provided by RefSeq]

**Other Designations**

NY-REN-8 antigen|OTTHUMP00000022820|PP2A B" subunit PR48|PP2A, subunit B, PR48 isoform|protein phosphatase 2, regulatory subunit B", beta|serine/threonine protein phosphatase 2A, 48kDa regulatory subunit B

---