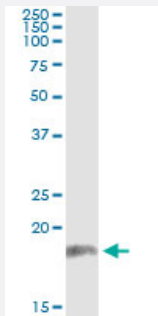


PPP2R3B (Human) IP-WB Antibody Pair

Catalog # H00028227-PW1

Size 1 Set

Applications



Immunoprecipitation of PPP2R3B transfected lysate using mouse monoclonal anti-PPP2R3B and Protein A Magnetic Bead ([U0007](#)), and immunoblotted with rabbit polyclonal anti-PPP2R3B.

Specification

Product Description	This IP-WB antibody pair set comes with one antibody for immunoprecipitation and another to detect the precipitated protein in western blot.
Reactivity	Human
Quality Control Testing	Immunoprecipitation-Western Blot (IP-WB) Immunoprecipitation of PPP2R3B transfected lysate using mouse monoclonal anti-PPP2R3B and Protein A Magnetic Bead (U0007), and immunoblotted with rabbit polyclonal anti-PPP2R3B.
Supplied Product	Antibody pair set content: 1. Antibody pair for IP: mouse monoclonal anti-PPP2R3B (300 ug) 2. Antibody pair for WB: rabbit polyclonal anti-PPP2R3B (50 ul)
Storage Instruction	Store reagents of the antibody pair set at -20°C or lower. Please aliquot to avoid repeated freeze thaw cycle. Reagents should be returned to -20°C storage immediately after use.

Applications

- Immunoprecipitation-Western Blot

[Protocol Download](#)

Gene Info — PPP2R3B

Entrez GeneID [28227](#)

Gene Name PPP2R3B

Gene Alias NY-REN-8, PPP2R3L, PPP2R3LY, PR48

Gene Description protein phosphatase 2 (formerly 2A), regulatory subunit B", beta

Omim ID [300339](#)

Gene Ontology [Hyperlink](#)

Gene Summary

Protein phosphatase 2 (formerly named type 2A) is one of the four major Ser/Thr phosphatases and is implicated in the negative control of cell growth and division. Protein phosphatase 2 holoenzymes are heterotrimeric proteins composed of a structural subunit A, a catalytic subunit C, and a regulatory subunit B. The regulatory subunit is encoded by a diverse set of genes that have been grouped into the B/PR55, B'/PR61, and B"/PR72 families. These different regulatory subunits confer distinct enzymatic specificities and intracellular localizations to the holoenzyme. The product of this gene belongs to the B" family. The B" family has been further divided into subfamilies. The product of this gene belongs to the beta subfamily of regulatory subunit B". Alternative splicing results in multiple transcript variants encoding different isoforms. [provided by RefSeq]

Other Designations

NY-REN-8 antigen|OTTHUMP00000022820|PP2A B" subunit PR48|PP2A, subunit B, PR48 isoform|protein phosphatase 2, regulatory subunit B", beta|serine/threonine protein phosphatase 2A, 48kDa regulatory subunit B