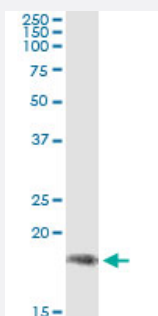


PPP2R3B monoclonal antibody (M14), clone 1F4

Catalog # H00028227-M14

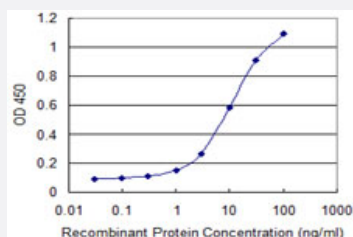
Size 100 ug

Applications



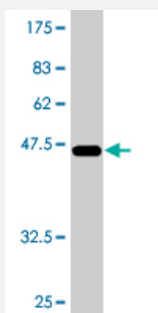
Immunoprecipitation

Immunoprecipitation of PPP2R3B transfected lysate using anti-PPP2R3B monoclonal antibody and Protein A Magnetic Bead, and immunoblotted with PPP2R3B MaxPab rabbit polyclonal antibody.



Sandwich ELISA (Recombinant protein)

Detection limit for recombinant GST tagged PPP2R3B is 0.3 ng/ml as a capture antibody.



Western Blot detection against Immunogen (45.1 KDa) .

Specification

Product Description

Mouse monoclonal antibody raised against a full-length recombinant PPP2R3B.

Immunogen	PPP2R3B (AAH09032, 1 a.a. ~ 176 a.a) full-length recombinant protein with GST tag. MW of the GST tag alone is 26 KDa.
Sequence	MDLDGDGALSMFELEYFYEEQCRRLLDSMAIEALPFQDCLCQMLDLVKPRTEGKITLQDLKRCKLANVFFDTFFNIEKYLDHEQKEQISLLRDGDSGGPELSDWEKYAAEEYDILVAEETAGEPWEDGFEAELSPVEQKLSALRSPLAQRPFPEAPSPLGAVDLIEYACGDEDESL
Host	Mouse
Reactivity	Human
Isotype	IgG1 Kappa
Quality Control Testing	Antibody Reactive Against Recombinant Protein. Western Blot detection against Immunogen (45.1 KDa) .
Storage Buffer	In 1x PBS, pH 7.4
Storage Instruction	Store at -20°C or lower. Aliquot to avoid repeated freezing and thawing.

Applications

- Western Blot (Recombinant protein)

[Protocol Download](#)

- Immunoprecipitation

Immunoprecipitation of PPP2R3B transfected lysate using anti-PPP2R3B monoclonal antibody and Protein A Magnetic Bead, and immunoblotted with PPP2R3B MaxPab rabbit polyclonal antibody.

[Protocol Download](#)

- Sandwich ELISA (Recombinant protein)

Detection limit for recombinant GST tagged PPP2R3B is 0.3 ng/ml as a capture antibody.

[Protocol Download](#)

- ELISA

Gene Info — PPP2R3B

Entrez GeneID [28227](#)

GeneBank Accession# [BC009032](#)

Protein Accession#	AAH09032
Gene Name	PPP2R3B
Gene Alias	NY-REN-8, PPP2R3L, PPP2R3LY, PR48
Gene Description	protein phosphatase 2 (formerly 2A), regulatory subunit B", beta
Omim ID	300339
Gene Ontology	Hyperlink
Gene Summary	<p>Protein phosphatase 2 (formerly named type 2A) is one of the four major Ser/Thr phosphatases and is implicated in the negative control of cell growth and division. Protein phosphatase 2 holoenzymes are heterotrimeric proteins composed of a structural subunit A, a catalytic subunit C, and a regulatory subunit B. The regulatory subunit is encoded by a diverse set of genes that have been grouped into the B/PR55, B'/PR61, and B''/PR72 families. These different regulatory subunits confer distinct enzymatic specificities and intracellular localizations to the holoenzyme. The product of this gene belongs to the B" family. The B" family has been further divided into subfamilies. The product of this gene belongs to the beta subfamily of regulatory subunit B". Alternative splicing results in multiple transcript variants encoding different isoforms. [provided by RefSeq]</p>
Other Designations	NY-REN-8 antigen OTTHUMP00000022820 PP2A B" subunit PR48 PP2A, subunit B, PR48 isoform protein phosphatase 2, regulatory subunit B", beta serine/threonine protein phosphatase 2A, 48kDa regulatory subunit B