

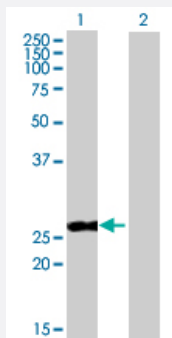
MaxPab®

PPP2R3B purified MaxPab mouse polyclonal antibody (B02P)

Catalog # H00028227-B02P

Size 50 ug

Applications

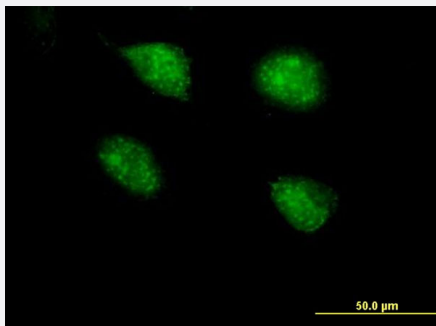


Western Blot (Transfected lysate)

Western Blot analysis of PPP2R3B expression in transfected 293T cell line ([H00028227-T02](#)) by PPP2R3B MaxPab polyclonal antibody.

Lane 1: PPP2R3B transfected lysate (19.36 kDa).

Lane 2: Non-transfected lysate.



Immunofluorescence

Immunofluorescence of purified MaxPab antibody to PPP2R3B on HeLa cell. [antibody concentration 10 ug/ml]

Specification

Product Description	Mouse polyclonal antibody raised against a full-length human PPP2R3B protein.
Immunogen	PPP2R3B (NP_955358.1, 1 a.a. ~ 176 a.a) full-length human protein.
Sequence	MDLDGDGALSMFELEYFYEEQCRRLD SMAIEALPFQDCLCQMLDLVKPRTEGKITLQDLKRCKLA NVFFDTFFNIEKYLDHEQKEQISLLRDGDSGGPELSDWEKYAAEEYDILVAEETAGEPWEDGFEA ELSPVEQKLSALRSPLAQRPFPEAPSPLGAVDLYEYACGDEDELEPL
Host	Mouse
Reactivity	Human

Quality Control Testing	Antibody reactive against mammalian transfected lysate.
Storage Buffer	In 1x PBS, pH 7.4
Storage Instruction	Store at -20°C or lower. Aliquot to avoid repeated freezing and thawing.

Applications

- Western Blot (Transfected lysate)

Western Blot analysis of PPP2R3B expression in transfected 293T cell line ([H00028227-T02](#)) by PPP2R3B MaxPab polyclonal antibody.

Lane 1: PPP2R3B transfected lysate(19.36 KDa).

Lane 2: Non-transfected lysate.

[Protocol Download](#)

- Immunofluorescence

Immunofluorescence of purified MaxPab antibody to PPP2R3B on HeLa cell. [antibody concentration 10 ug/ml]

Gene Info — PPP2R3B

Entrez GeneID	28227
GeneBank Accession#	NM_199326
Protein Accession#	NP_955358.1
Gene Name	PPP2R3B
Gene Alias	NY-REN-8, PPP2R3L, PPP2R3LY, PR48
Gene Description	protein phosphatase 2 (formerly 2A), regulatory subunit B", beta
Omim ID	300339
Gene Ontology	Hyperlink

Gene Summary

Protein phosphatase 2 (formerly named type 2A) is one of the four major Ser/Thr phosphatases and is implicated in the negative control of cell growth and division. Protein phosphatase 2 holoenzymes are heterotrimeric proteins composed of a structural subunit A, a catalytic subunit C, and a regulatory subunit B. The regulatory subunit is encoded by a diverse set of genes that have been grouped into the B/PR55, B'/PR61, and B''/PR72 families. These different regulatory subunits confer distinct enzymatic specificities and intracellular localizations to the holoenzyme. The product of this gene belongs to the B'' family. The B'' family has been further divided into subfamilies. The product of this gene belongs to the beta subfamily of regulatory subunit B''. Alternative splicing results in multiple transcript variants encoding different isoforms. [provided by RefSeq]

Other Designations

NY-REN-8 antigen|OTTHUMP00000022820|PP2A B'' subunit PR48|PP2A, subunit B, PR48 isoform|protein phosphatase 2, regulatory subunit B'', beta|serine/threonine protein phosphatase 2A, 48kDa regulatory subunit B