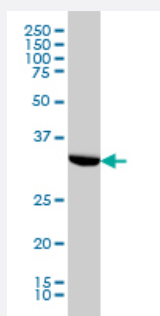


HTRA2 monoclonal antibody (M03), clone 3G5

Catalog # H00027429-M03

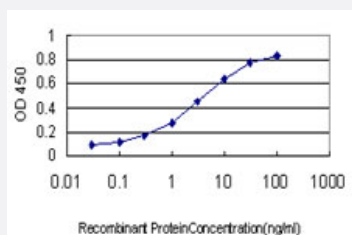
Size 100 ug

Applications



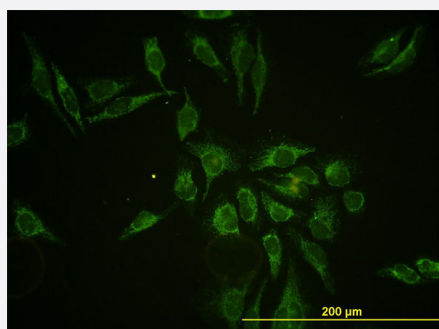
Western Blot (Cell lysate)

HTRA2 monoclonal antibody (M03), clone 3G5 Western Blot analysis of HTRA2 expression in HeLa (Cat # L013V1).



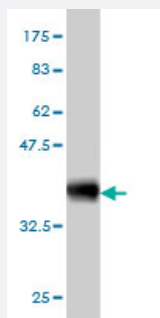
Sandwich ELISA (Recombinant protein)

Detection limit for recombinant GST tagged HTRA2 is approximately 0.03ng/ml as a capture antibody.



Immunofluorescence

Immunofluorescence of monoclonal antibody to HTRA2 on HeLa cell. [antibody concentration 10 ug/ml]



Western Blot detection against Immunogen (36.63 KDa) .

Specification

Product Description	Mouse monoclonal antibody raised against a partial recombinant HTRA2.
Immunogen	HTRA2 (AAH00096, 359 a.a. ~ 458 a.a) partial recombinant protein with GST tag. MW of the GST tag alone is 26 KDa.
Sequence	RRYIGVMMLTLSPSILAELQLREPSFPDVQHGVLIHKVILGSPAHRAGLRPGDVILAIGEQMVQNAE DVYEAVRTQSQLAVQIRRGRETLLTYVTPEVTE
Host	Mouse
Reactivity	Human
Interspecies Antigen Sequence	Mouse (84); Rat (87)
Isotype	IgG1 Kappa
Quality Control Testing	Antibody Reactive Against Recombinant Protein. Western Blot detection against Immunogen (36.63 KDa) .
Storage Buffer	In 1x PBS, pH 7.4
Storage Instruction	Store at -20°C or lower. Aliquot to avoid repeated freezing and thawing.

Applications

- Western Blot (Cell lysate)

HTRA2 monoclonal antibody (M03), clone 3G5 Western Blot analysis of HTRA2 expression in HeLa (Cat # L013V1).

[Protocol Download](#)

- Western Blot (Recombinant protein)

[Protocol Download](#)

- Sandwich ELISA (Recombinant protein)

Detection limit for recombinant GST tagged HTRA2 is approximately 0.03ng/ml as a capture antibody.

[Protocol Download](#)

- ELISA

- Immunofluorescence

Immunofluorescence of monoclonal antibody to HTRA2 on HeLa cell. [antibody concentration 10 ug/ml]

Gene Info — HTRA2

Entrez GeneID [27429](#)

GeneBank Accession# [BC000096](#)

Protein Accession# [AAH00096](#)

Gene Name HTRA2

Gene Alias OMI, PARK13, PRSS25

Gene Description HtrA serine peptidase 2

Omim ID [606441](#) [610297](#)

Gene Ontology [Hyperlink](#)

Gene Summary This gene encodes a serine protease. The protein has been localized in the endoplasmic reticulum and interacts with an alternatively spliced form of mitogen-activated protein kinase 14. The protein has also been localized to the mitochondria with release to the cytosol following apoptotic stimulus. The protein is thought to induce apoptosis by binding the apoptosis inhibitory protein baculoviral IAP repeat-containing 4. Nuclear localization of this protein has also been observed. Alternative splicing of this gene results in two transcript variants encoding different isoforms. Additional transcript variants have been described, but their full-length sequences have not been determined. [provided by RefSeq]

Other Designations HtrA-like serine protease|Omi stress-regulated endoprotease|high temperature requirement protein A2|protease, serine, 25

Disease

- [Genetic Predisposition to Disease](#)
- [Parkinson disease](#)
- [Parkinsonian Disorders](#)