

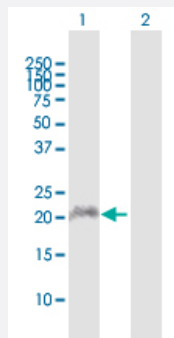
MaxPab®

APOBEC3C purified MaxPab rabbit polyclonal antibody (D01P)

Catalog # H00027350-D01P

Size 100 ug

Applications



Western Blot (Transfected lysate)

Western Blot analysis of APOBEC3C expression in transfected 293T cell line ([H00027350-T01](#)) by APOBEC3C MaxPab polyclonal antibody.

Lane 1: APOBEC3C transfected lysate(22.80 KDa).

Lane 2: Non-transfected lysate.

Specification

Product Description	Rabbit polyclonal antibody raised against a full-length human APOBEC3C protein.
Immunogen	APOBEC3C (NP_055323.2, 1 a.a. ~ 190 a.a) full-length human protein.
Sequence	MNPQIRNPMKAMYPGTFYFQFKNLWEANDRNETWLCFTVEGIKRRSVVSWKTGVFRNQVDSETH CHAERCFLSWFCDDILSPNTKYQVTWYTSWSPCPDCAGEVAEFLARHSNVNLTIFTARLYYFQYP CYQEGLRSLSQEGVAVEIMDYEDFKYCWENFVYNDNEPFKPWKGLKTNFRLKRRRLRESLQ
Host	Rabbit
Reactivity	Human
Quality Control Testing	Antibody reactive against mammalian transfected lysate.
Storage Buffer	In 1x PBS, pH 7.4
Storage Instruction	Store at -20°C or lower. Aliquot to avoid repeated freezing and thawing.

Applications

- Western Blot (Transfected lysate)

Western Blot analysis of APOBEC3C expression in transfected 293T cell line ([H00027350-T01](#)) by APOBEC3C MaxPab polyclonal antibody.

Lane 1: APOBEC3C transfected lysate(22.80 KDa).

Lane 2: Non-transfected lysate.

[Protocol Download](#)

Gene Info — APOBEC3C

Entrez GeneID [27350](#)

GeneBank Accession# [NM_014508.2](#)

Protein Accession# [NP_055323.2](#)

Gene Name APOBEC3C

Gene Alias APOBEC1L, ARDC2, ARDC4, ARP5, MGC19485, PBI, bK150C2.3

Gene Description apolipoprotein B mRNA editing enzyme, catalytic polypeptide-like 3C

Omim ID [607750](#)

Gene Ontology [Hyperlink](#)

Gene Summary This gene is a member of the cytidine deaminase gene family. It is one of seven related genes or pseudogenes found in a cluster thought to result from gene duplication, on chromosome 22. Members of the cluster encode proteins that are structurally and functionally related to the C to U RNA-editing cytidine deaminase APOBEC1. It is thought that the proteins may be RNA editing enzymes and have roles in growth or cell cycle control. [provided by RefSeq]

Other Designations -

Pathway

- [Atrazine degradation](#)