

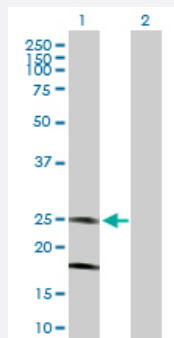
MaxPab®

# KCNMB4 purified MaxPab mouse polyclonal antibody (B01P)

Catalog # H00027345-B01P

Size 50 ug

## Applications



### Western Blot (Transfected lysate)

Western Blot analysis of KCNMB4 expression in transfected 293T cell line ([H00027345-T01](#)) by KCNMB4 MaxPab polyclonal antibody.

Lane 1: KCNMB4 transfected lysate(23.1 KDa).

Lane 2: Non-transfected lysate.

## Specification

Product Description	Mouse polyclonal antibody raised against a full-length human KCNMB4 protein.
Immunogen	KCNMB4 (NP_055320.4, 1 a.a. ~ 210 a.a) full-length human protein.
Sequence	MAKLRVAYEYEAEDKSIRLGLFLISGVVSLFIFGFCWLSPALQDLQATEANCTVLSVQQIGEVFE CTFTCGADCRGTSQYPCVQVYNNSESNSRALLHSDEHQLLTNPKCSYIPPCCKRENQKNLESVM NWQQYWKDEIGSQPFTCYFNQHQRPDVLLHRTHDEVLLHCFLWPLVTFVVGVLIVLTICAKSL AVKAEAMKKRKFS
Host	Mouse
Reactivity	Human
Quality Control Testing	Antibody reactive against mammalian transfected lysate.
Storage Buffer	In 1x PBS, pH 7.4
Storage Instruction	Store at -20°C or lower. Aliquot to avoid repeated freezing and thawing.

## Applications

- Western Blot (Transfected lysate)

Western Blot analysis of KCNMB4 expression in transfected 293T cell line ([H00027345-T01](#)) by KCNMB4 MaxPab polyclonal antibody.

Lane 1: KCNMB4 transfected lysate(23.1 KDa).

Lane 2: Non-transfected lysate.

[Protocol Download](#)

## Gene Info — KCNMB4

Entrez GeneID [27345](#)

GeneBank Accession# [NM\\_014505](#)

Protein Accession# [NP\\_055320.4](#)

Gene Name KCNMB4

Gene Alias -

Gene Description potassium large conductance calcium-activated channel, subfamily M, beta member 4

Omim ID [605223](#)

Gene Ontology [Hyperlink](#)

**Gene Summary** MaxiK channels are large conductance, voltage and calcium-sensitive potassium channels which are fundamental to the control of smooth muscle tone and neuronal excitability. MaxiK channels can be formed by 2 subunits: the pore-forming alpha subunit and the modulatory beta subunit. The protein encoded by this gene is an auxiliary beta subunit which slows activation kinetics, leads to steeper calcium sensitivity, and shifts the voltage range of current activation to more negative potentials than does the beta 1 subunit. [provided by RefSeq]

**Other Designations** calcium-activated potassium channel beta 4 subunit|large conductance calcium-dependent potassium ion channel beta 4 subunit

## Pathway

- [Vascular smooth muscle contraction](#)

## Disease

- [Epilepsy](#)
- [Genetic Predisposition to Disease](#)
- [Seizures](#)
- [Syndrome](#)