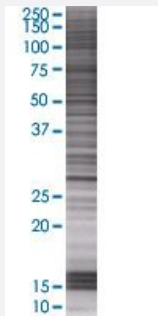


UBE2S 293T Cell Transient Overexpression Lysate(Denatured)

Catalog # H00027338-T01

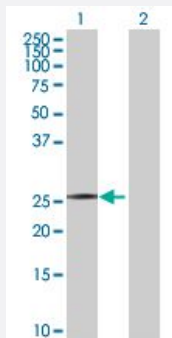
Size 100 uL

Applications



SDS-PAGE Gel

UBE2S transfected lysate.



Western Blot

Lane 1: UBE2S transfected lysate (24.53 KDa)

Lane 2: Non-transfected lysate.

Specification

Transfected Cell Line	293T
Plasmid	pCMV-UBE2S full-length
Host	Human
Theoretical MW (kDa)	24.53
Interspecies Antigen Sequence	Mouse (92); Rat (93)

Quality Control Testing

Transient overexpression cell lysate was tested with Anti-UBE2S antibody ([H00027338-B01](#)) by Western Blots.
SDS-PAGE Gel
UBE2S transfected lysate.
Western Blot
Lane 1: UBE2S transfected lysate (24.53 KDa)
Lane 2: Non-transfected lysate.

Storage Buffer

1X Sample Buffer (50 mM Tris-HCl, 2% SDS, 10% glycerol, 300 mM 2-mercaptoethanol, 0.01% Bromophenol blue)

Storage Instruction

Store at -80°C. Aliquot to avoid repeated freezing and thawing.

Applications

- Western Blot

Gene Info — UBE2S

Entrez GeneID[27338](#)**GeneBank Accession#**[NM_014501.2](#)**Protein Accession#**[NP_055316.2](#)**Gene Name**

UBE2S

Gene Alias

E2-EPF, E2EPF, EPF5

Gene Description

ubiquitin-conjugating enzyme E2S

Omim ID[610309](#)**Gene Ontology**[Hyperlink](#)**Gene Summary**

This gene encodes a member of the ubiquitin-conjugating enzyme family. The encoded protein is able to form a thiol ester linkage with ubiquitin in a ubiquitin activating enzyme-dependent manner, a characteristic property of ubiquitin carrier proteins. [provided by RefSeq]

Other Designations

ubiquitin carrier protein S|ubiquitin-conjugating enzyme E2-24 kD|ubiquitin-protein ligase S

Pathway

- [Ubiquitin mediated proteolysis](#)