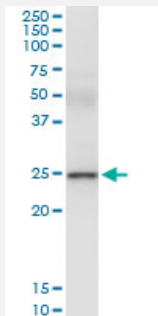


# UBE2S (Human) IP-WB Antibody Pair

Catalog # H00027338-PW2

Size 1 Set

## Applications



Immunoprecipitation of UBE2S transfected lysate using rabbit polyclonal anti-UBE2S and Protein A Magnetic Bead ([U0007](#)), and immunoblotted with mouse purified polyclonal anti-UBE2S.

## Specification

<b>Product Description</b>	This IP-WB antibody pair set comes with one antibody for immunoprecipitation and another to detect the precipitated protein in western blot.
<b>Reactivity</b>	Human
<b>Interspecies Antigen Sequence</b>	Mouse (92); Rat (93)
<b>Quality Control Testing</b>	Immunoprecipitation-Western Blot (IP-WB) Immunoprecipitation of UBE2S transfected lysate using rabbit polyclonal anti-UBE2S and Protein A Magnetic Bead ( <a href="#">U0007</a> ), and immunoblotted with mouse purified polyclonal anti-UBE2S.
<b>Supplied Product</b>	Antibody pair set content: 1. Antibody pair for IP: rabbit polyclonal anti-UBE2S (300 ul) 2. Antibody pair for WB: mouse purified polyclonal anti-UBE2S (50 ug)
<b>Storage Instruction</b>	Store reagents of the antibody pair set at -20°C or lower. Please aliquot to avoid repeated freeze thaw cycle. Reagents should be returned to -20°C storage immediately after use.

## Applications

- Immunoprecipitation-Western Blot

[Protocol Download](#)

## Gene Info — UBE2S

**Entrez GeneID** [27338](#)

**Gene Name** UBE2S

**Gene Alias** E2-EPF, E2EPF, EPF5

**Gene Description** ubiquitin-conjugating enzyme E2S

**Omim ID** [610309](#)

**Gene Ontology** [Hyperlink](#)

**Gene Summary** This gene encodes a member of the ubiquitin-conjugating enzyme family. The encoded protein is able to form a thiol ester linkage with ubiquitin in a ubiquitin activating enzyme-dependent manner, a characteristic property of ubiquitin carrier proteins. [provided by RefSeq]

**Other Designations** ubiquitin carrier protein S|ubiquitin-conjugating enzyme E2-24 kD|ubiquitin-protein ligase S

## Pathway

- [Ubiquitin mediated proteolysis](#)