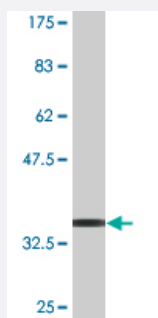


# TNRC6A monoclonal antibody (M05), clone 2A10

Catalog # H00027327-M05

Size 100 ug

## Applications



Western Blot detection against Immunogen (37.00 KDa) .

## Specification

<b>Product Description</b>	Mouse monoclonal antibody raised against a partial recombinant TNRC6A.
<b>Immunogen</b>	TNRC6A (NP_055309, 254 a.a. ~ 353 a.a) partial recombinant protein with GST tag. MW of the GST tag alone is 26 KDa.
<b>Sequence</b>	MDADSASSSESERNITIMASGNTGGEKDGLRNSTGLGSQNKFFVVGSSSNNVGHGSSTGPWGFS HGAIISTCQVSVDAPESKSESSNNRMNAWGTVSSSSN
<b>Host</b>	Mouse
<b>Reactivity</b>	Human
<b>Interspecies Antigen Sequence</b>	Mouse (94); Rat (93)
<b>Isotype</b>	IgG2a Kappa
<b>Quality Control Testing</b>	Antibody Reactive Against Recombinant Protein. Western Blot detection against Immunogen (37.00 KDa) .
<b>Storage Buffer</b>	In 1x PBS, pH 7.4
<b>Storage Instruction</b>	Store at -20°C or lower. Aliquot to avoid repeated freezing and thawing.

## Applications

- Western Blot (Recombinant protein)

[Protocol Download](#)

- ELISA

## Gene Info — TNRC6A

Entrez GeneID	<a href="#">27327</a>
GeneBank Accession#	<a href="#">NM_014494</a>
Protein Accession#	<a href="#">NP_055309</a>
Gene Name	TNRC6A
Gene Alias	CAGH26, DKFZp666E117, FLJ22043, GW1, GW182, KIAA1460, MGC75384, TNRC6
Gene Description	trinucleotide repeat containing 6A
Omim ID	<a href="#">610739</a>
Gene Ontology	<a href="#">Hyperlink</a>
Gene Summary	This gene encodes a member of the trinucleotide repeat containing 6 protein family. The protein functions in post-transcriptional gene silencing through the RNA interference (RNAi) and microRNA pathways. The protein associates with messenger RNAs and Argonaute proteins in cytoplasmic bodies known as GW-bodies or P-bodies. Inhibiting expression of this gene delocalizes other GW-body proteins and impairs RNAi and microRNA-induced gene silencing. [provided by RefSeq]
Other Designations	CAG repeat protein 26 EDIE GW182 autoantigen OTTHUMP00000122485 glycine-tryptophan protein of 182 kDa trinucleotide repeat-containing gene 6A