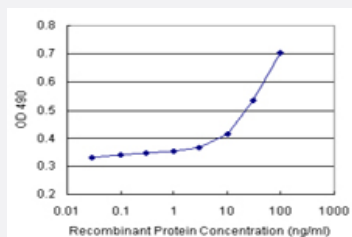


MOCS3 (Human) Matched Antibody Pair

Catalog # H00027304-AP11

Size 1 Set

Applications



Sandwich ELISA detection sensitivity ranging from 10 ng/ml to 100 ng/ml.

Specification

Product Description	This antibody pair set comes with a matched antibody pair to detect and quantify the protein level of human MOCS3.
Reactivity	Human
Interspecies Antigen Sequence	Mouse (79); Rat (80)
Quality Control Testing	Standard curve using recombinant protein (H00027304-P01) as an analyte. Sandwich ELISA detection sensitivity ranging from 10 ng/ml to 100 ng/ml.
Supplied Product	Antibody pair set content: 1. Capture antibody: rabbit MaxPab® affinity purified polyclonal anti-MOCS3 (100 ug) 2. Detection antibody: mouse monoclonal anti-MOCS3, IgG2b Kappa (20 ug) *Reagents are sufficient for at least 1-2 x 96 well plates using recommended protocols.
Storage Instruction	Store reagents of the antibody pair set at -20°C or lower. Please aliquot to avoid repeated freeze thaw cycle. Reagents should be returned to -20°C storage immediately after use.

Applications

- ELISA Pair (Recombinant protein)

[Protocol Download](#)

Gene Info — MOCS3

Entrez GeneID [27304](#)

Gene Name MOCS3

Gene Alias MGC9252, UBA4, dJ914P20.3

Gene Description molybdenum cofactor synthesis 3

Omim ID [609277](#)

Gene Ontology [Hyperlink](#)

Gene Summary Molybdenum cofactor (MoCo) is necessary for the function of all molybdoenzymes. One of the enzymes required for the biosynthesis of MoCo is molybdopterin synthase (MPT synthase). The protein encoded by this gene adenylates and activates MPT synthase. This gene contains no introns. A pseudogene of this gene is present on chromosome 14. [provided by RefSeq]

Other Designations MPT synthase sulfurylase|UBA4, ubiquitin-activating enzyme E1 homolog|molybdopterin synthase sulfurylase|ubiquitin-like modifier activating enzyme 4