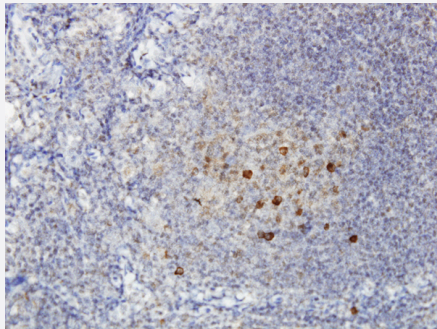


ADAMDEC1 monoclonal antibody (M01), clone 6C4

Catalog # H00027299-M01

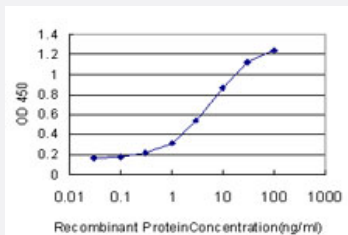
Size 100 ug

Applications



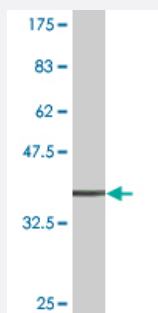
Immunohistochemistry (Formalin/PFA-fixed paraffin-embedded sections)

Immunoperoxidase of monoclonal antibody to ADAMDEC1 on formalin-fixed paraffin-embedded human tonsil. [antibody concentration 3 ug/ml]



Sandwich ELISA (Recombinant protein)

Detection limit for recombinant GST tagged ADAMDEC1 is approximately 0.3ng/ml as a capture antibody.



Western Blot detection against Immunogen (37.84 KDa) .

Specification

Product Description

Mouse monoclonal antibody raised against a partial recombinant ADAMDEC1.

Immunogen	ADAMDEC1 (NP_055294, 361 a.a. ~ 470 a.a) partial recombinant protein with GST tag. MW of the GST tag alone is 26 KDa.
Sequence	PDVPFNTKCPGSGSCVMNQYLSSKFPKDFSTSCRAHFERYLLSQPKCLLQAPIPTNIMTTPVCGN HLLVGEDCDCGSPKECTNLCCEALTCKLKPGTDCGGDAPNHTTE
Host	Mouse
Reactivity	Human
Interspecies Antigen Sequence	Mouse (67)
Isotype	IgG2a Kappa
Quality Control Testing	Antibody Reactive Against Recombinant Protein. Western Blot detection against Immunogen (37.84 KDa) .
Storage Buffer	In 1x PBS, pH 7.4
Storage Instruction	Store at -20°C or lower. Aliquot to avoid repeated freezing and thawing.

Applications

- Western Blot (Recombinant protein)

[Protocol Download](#)

- Immunohistochemistry (Formalin/PFA-fixed paraffin-embedded sections)

Immunoperoxidase of monoclonal antibody to ADAMDEC1 on formalin-fixed paraffin-embedded human tonsil. [antibody concentration 3 ug/ml]

[Protocol Download](#)

- Sandwich ELISA (Recombinant protein)

Detection limit for recombinant GST tagged ADAMDEC1 is approximately 0.3ng/ml as a capture antibody.

[Protocol Download](#)

- ELISA

Gene Info — ADAMDEC1

Entrez GeneID

[27299](#)

GeneBank Accession#	NM_014479
Protein Accession#	NP_055294
Gene Name	ADAMDEC1
Gene Alias	M12.219
Gene Description	ADAM-like, decysin 1
Omim ID	606393
Gene Ontology	Hyperlink
Gene Summary	This encoded protein is thought to be a secreted protein belonging to the disintegrin metalloprotease family. Its expression is upregulated during dendritic cells maturation. This protein may play an important role in dendritic cell function and their interactions with germinal center T cells. [provided by RefSeq]
Other Designations	decysin disintegrin protease

Publication Reference

- [Gene Expression Profiling Identifies MMP-12 and ADAMDEC1 as Potential Pathogenic Mediators of Pulmonary Sarcoidosis.](#)

Crouser ED, Culver DA, Knox KS, Julian MW, Shao G, Abraham S, Liyanarachchi S, Macre JE, Wewers MD, Gavriliu MA, Ross P, Abbas A, Eng C.

American Journal of Respiratory and Critical Care Medicine 2009 May; 179(10):929.

Application: IHC-Fr, Human, Human synovial biopsy samples

Disease

- [Genetic Predisposition to Disease](#)