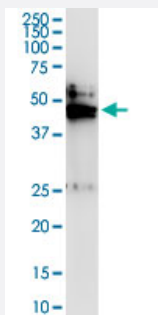


SMPDL3B (Human) IP-WB Antibody Pair

Catalog # H00027293-PW2

Size 1 Set

Applications



Immunoprecipitation of SMPDL3B transfected lysate using rabbit polyclonal anti-SMPDL3B and Protein A Magnetic Bead ([U0007](#)), and immunoblotted with mouse purified polyclonal anti-SMPDL3B.

Specification

Product Description	This IP-WB antibody pair set comes with one antibody for immunoprecipitation and another to detect the precipitated protein in western blot.
Reactivity	Human
Interspecies Antigen Sequence	Mouse (82); Rat (80)
Quality Control Testing	Immunoprecipitation-Western Blot (IP-WB) Immunoprecipitation of SMPDL3B transfected lysate using rabbit polyclonal anti-SMPDL3B and Protein A Magnetic Bead (U0007), and immunoblotted with mouse purified polyclonal anti-SMPDL3B.
Supplied Product	Antibody pair set content: 1. Antibody pair for IP: rabbit polyclonal anti-SMPDL3B (300 ul) 2. Antibody pair for WB: mouse purified polyclonal anti-SMPDL3B (50 ug)
Storage Instruction	Store reagents of the antibody pair set at -20°C or lower. Please aliquot to avoid repeated freeze thaw cycle. Reagents should be returned to -20°C storage immediately after use.

Applications

- Immunoprecipitation-Western Blot

[Protocol Download](#)

Gene Info — SMPDL3B

Entrez GeneID	27293
Gene Name	SMPDL3B
Gene Alias	ASML3B
Gene Description	sphingomyelin phosphodiesterase, acid-like 3B
Gene Ontology	Hyperlink
Gene Summary	O
Other Designations	OTTHUMP00000004004 OTTHUMP00000004005 acid sphingomyelinase-like phosphodiesterase acid sphingomyelinase-like phosphodiesterase 3B