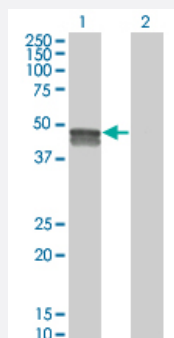


SMPDL3B monoclonal antibody (M01), clone 5E12

Catalog # H00027293-M01

Size 100 ug

Applications

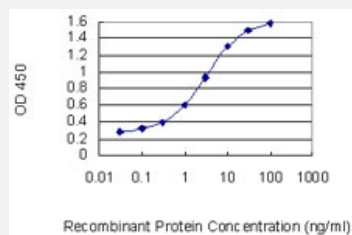


Western Blot (Transfected lysate)

Western Blot analysis of SMPDL3B expression in transfected 293T cell line by SMPDL3B monoclonal antibody (M01), clone 5E12.

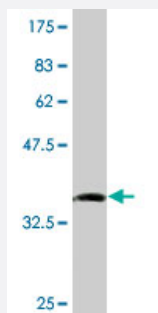
Lane 1: SMPDL3B transfected lysate(41.7 KDa).

Lane 2: Non-transfected lysate.



Sandwich ELISA (Recombinant protein)

Detection limit for recombinant GST tagged SMPDL3B is 0.03 ng/ml as a capture antibody.



Western Blot detection against Immunogen (36.63 KDa) .

Specification

Product Description

Mouse monoclonal antibody raised against a partial recombinant SMPDL3B.

Immunogen	SMPDL3B (NP_001009568, 274 a.a. ~ 372 a.a) partial recombinant protein with GST tag. MW of the GST tag alone is 26 KDa.
Sequence	FFGHHHTDSFRMLYDDAGVPISAMFITPGVTPWKTTLPGVVNGANNPAIRVFEYDRATLSLKVRSP AEARGGGWEGLKCITTFPHSQLIHLPLTTEPQE
Host	Mouse
Reactivity	Human
Interspecies Antigen Sequence	Mouse (82); Rat (80)
Isotype	IgG3 Kappa
Quality Control Testing	Antibody Reactive Against Recombinant Protein. Western Blot detection against Immunogen (36.63 KDa) .
Storage Buffer	In 1x PBS, pH 7.4
Storage Instruction	Store at -20°C or lower. Aliquot to avoid repeated freezing and thawing.

Applications

- Western Blot (Transfected lysate)

Western Blot analysis of SMPDL3B expression in transfected 293T cell line by SMPDL3B monoclonal antibody (M01), clone 5E12.

Lane 1: SMPDL3B transfected lysate(41.7 KDa).

Lane 2: Non-transfected lysate.

[Protocol Download](#)

- Western Blot (Recombinant protein)

[Protocol Download](#)

- Sandwich ELISA (Recombinant protein)

Detection limit for recombinant GST tagged SMPDL3B is 0.03 ng/ml as a capture antibody.

[Protocol Download](#)

- ELISA

Gene Info — SMPDL3B

Entrez GeneID	27293
GeneBank Accession#	NM_001009568
Protein Accession#	NP_001009568
Gene Name	SMPDL3B
Gene Alias	ASML3B
Gene Description	sphingomyelin phosphodiesterase, acid-like 3B
Gene Ontology	Hyperlink
Gene Summary	O
Other Designations	OTTHUMP00000004004 OTTHUMP00000004005 acid sphingomyelinase-like phosphodiesterase acid sphingomyelinase-like phosphodiesterase 3B