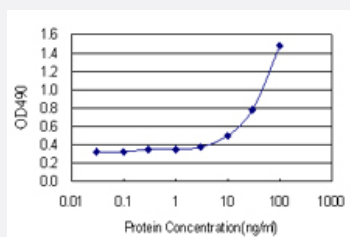


SMPDL3B (Human) Matched Antibody Pair

Catalog # H00027293-AP21

Size 1 Set

Applications



Sandwich ELISA detection sensitivity ranging from 3 ng/ml to 100 ng/ml.

Specification

Product Description	This antibody pair set comes with a matched antibody pair to detect and quantify the protein level of human SMPDL3B.
Reactivity	Human
Interspecies Antigen Sequence	Mouse (82); Rat (80)
Quality Control Testing	Standard curve using recombinant protein (H00027293-P01) as an analyte. Sandwich ELISA detection sensitivity ranging from 3 ng/ml to 100 ng/ml.
Supplied Product	Antibody pair set content: 1. Capture antibody: rabbit MaxPab® affinity purified polyclonal anti-SMPDL3B (100 ug) 2. Detection antibody: mouse polyclonal anti-SMPDL3B (40 ul) *Reagents are sufficient for at least 3-5 x 96 well plates using recommended protocols.
Storage Instruction	Store reagents of the antibody pair set at -20°C or lower. Please aliquot to avoid repeated freeze thaw cycle. Reagents should be returned to -20°C storage immediately after use.

Applications

- ELISA Pair (Recombinant protein)

[Protocol Download](#)

Gene Info — SMPDL3B

Entrez GeneID	27293
Gene Name	SMPDL3B
Gene Alias	ASML3B
Gene Description	sphingomyelin phosphodiesterase, acid-like 3B
Gene Ontology	Hyperlink
Gene Summary	O
Other Designations	OTTHUMP00000004004 OTTHUMP00000004005 acid sphingomyelinase-like phosphodiesterase acid sphingomyelinase-like phosphodiesterase 3B