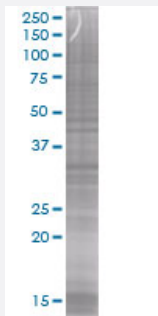


SULT1B1 293T Cell Transient Overexpression Lysate(Denatured)

Catalog # H00027284-T01

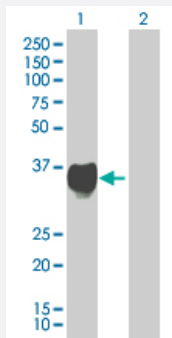
Size 100 uL

Applications



SDS-PAGE Gel

SULT1B1 transfected lysate



Western Blot

Lane 1: SULT1B1 transfected lysate (32.67 KDa).

Lane 2: Non-transfected lysate.

Specification

Transfected Cell Line	293T
Plasmid	pCMV-SULT1B1 full-length
Host	Human
Theoretical MW (kDa)	32.67
Interspecies Antigen Sequence	Mouse (72); Rat (73)

Quality Control Testing

Transient overexpression cell lysate was tested with Anti-SULT1B1 antibody ([H00027284-B01](#)) by Western Blots.
SDS-PAGE Gel
SULT1B1 transfected lysate
Western Blot
Lane 1: SULT1B1 transfected lysate (32.67 KDa).
Lane 2: Non-transfected lysate.

Storage Buffer

1X Sample Buffer (50 mM Tris-HCl, 2% SDS, 10% glycerol, 300 mM 2-mercaptoethanol, 0.01% Bromophenol blue)

Storage Instruction

Store at -80°C. Aliquot to avoid repeated freezing and thawing.

Applications

- Western Blot

Gene Info — SULT1B1

Entrez GeneID

[27284](#)

GeneBank Accession#

[BC010895](#)

Protein Accession#

[AAH10895](#)

Gene Name

SULT1B1

Gene Alias

MGC13356, ST1B2, SULT1B2

Gene Description

sulfotransferase family, cytosolic, 1B, member 1

Omim ID

[608436](#)

Gene Ontology

[Hyperlink](#)

Gene Summary

Sulfotransferase enzymes catalyze the sulfate conjugation of many hormones, neurotransmitters, drugs, and xenobiotic compounds. These cytosolic enzymes are different in their tissue distributions and substrate specificities. The gene structure (number and length of exons) is similar among family members. However, the total genomic length of this gene is greater than that of other SULT 1 genes. [provided by RefSeq]

Other Designations

sulfotransferase 1B1|sulfotransferase 1B2|thyroid hormone sulfotransferase

Disease

- [Hearing Loss](#)