

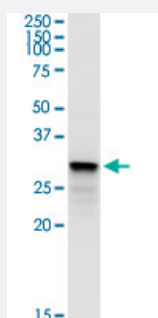
MaxPab®

SULT1B1 purified MaxPab rabbit polyclonal antibody (D01P)

Catalog # H00027284-D01P

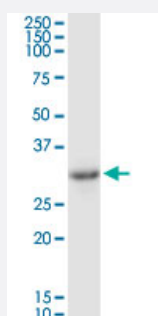
Size 100 ug

Applications



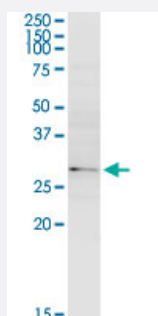
Western Blot (Tissue lysate)

SULT1B1 MaxPab rabbit polyclonal antibody. Western Blot analysis of SULT1B1 expression in human colon.



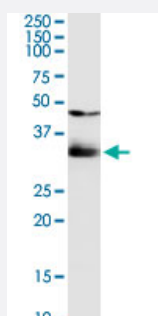
Western Blot (Tissue lysate)

SULT1B1 MaxPab rabbit polyclonal antibody. Western Blot analysis of SULT1B1 expression in mouse kidney.



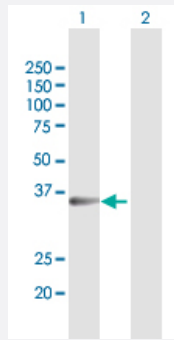
Western Blot (Tissue lysate)

SULT1B1 MaxPab rabbit polyclonal antibody. Western Blot analysis of SULT1B1 expression in rat brain.



Western Blot (Cell lysate)

SULT1B1 MaxPab rabbit polyclonal antibody. Western Blot analysis of SULT1B1 expression in Hela S3 NE.



Western Blot (Transfected lysate)

Western Blot analysis of SULT1B1 expression in transfected 293T cell line ([H00027284-T03](#)) by SULT1B1 MaxPab polyclonal antibody.

Lane 1: SULT1B1 transfected lysate(34.90 KDa).

Lane 2: Non-transfected lysate.

Specification

Product Description	Rabbit polyclonal antibody raised against a full-length human SULT1B1 protein.
Immunogen	SULT1B1 (NP_055280.2, 1 a.a. ~ 296 a.a) full-length human protein.
Sequence	MLSPKDILRKDLKLVHGYPMTCASFASNWEKIEQFHSRPDDMIATYPKSGTTWVSEIIDMILNDGDIE KCKRGFITEKVPMLEMTLPGLRTSGIEQLEKNPSRPMKTHLPTDLLPKSFWENNCKMMLARNAK DVSVSYYHFDLMNNLQPFPGTWEEYLEKFLTGKVAYGSWFTHVKNWWWKKKEEHPIFLYYEDMK ENPKEEIKIIRFLEKNLNDEILDRIIHHTSFEVMKDNPLVNYTHLPTTVMDHSKSPFMRKGTAGDWK NYFTVAQNEKFDAYETEMSKTALQFRTEI
Host	Rabbit
Reactivity	Human, Mouse, Rat
Interspecies Antigen Sequence	Mouse (72); Rat (73)
Quality Control Testing	Antibody reactive against mammalian transfected lysate.
Storage Buffer	In 1x PBS, pH 7.4
Storage Instruction	Store at -20°C or lower. Aliquot to avoid repeated freezing and thawing.

Applications

- Western Blot (Tissue lysate)

SULT1B1 MaxPab rabbit polyclonal antibody. Western Blot analysis of SULT1B1 expression in human colon.

[Protocol Download](#)

- Western Blot (Tissue lysate)

SULT1B1 MaxPab rabbit polyclonal antibody. Western Blot analysis of SULT1B1 expression in mouse kidney.

[Protocol Download](#)

- Western Blot (Tissue lysate)

SULT1B1 MaxPab rabbit polyclonal antibody. Western Blot analysis of SULT1B1 expression in rat brain.

[Protocol Download](#)

- Western Blot (Cell lysate)

SULT1B1 MaxPab rabbit polyclonal antibody. Western Blot analysis of SULT1B1 expression in Hela S3 NE.

[Protocol Download](#)

- Western Blot (Transfected lysate)

Western Blot analysis of SULT1B1 expression in transfected 293T cell line ([H00027284-T03](#)) by SULT1B1 MaxPab polyclonal antibody.

Lane 1: SULT1B1 transfected lysate(34.90 KDa).

Lane 2: Non-transfected lysate.

[Protocol Download](#)

Gene Info — SULT1B1

Entrez GeneID [27284](#)

GeneBank Accession# [NM_014465.2](#)

Protein Accession# [NP_055280.2](#)

Gene Name SULT1B1

Gene Alias MGC13356, ST1B2, SULT1B2

Gene Description sulfotransferase family, cytosolic, 1B, member 1

Omim ID [608436](#)

Gene Ontology [Hyperlink](#)

Gene Summary

Sulfotransferase enzymes catalyze the sulfate conjugation of many hormones, neurotransmitters, drugs, and xenobiotic compounds. These cytosolic enzymes are different in their tissue distributions and substrate specificities. The gene structure (number and length of exons) is similar among family members. However, the total genomic length of this gene is greater than that of other SULT 1 genes. [provided by RefSeq]

Other Designations

sulfotransferase 1B1|sulfotransferase 1B2|thyroid hormone sulfotransferase

Disease

- [Hearing Loss](#)