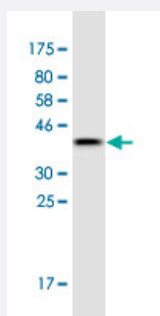


LSM3 monoclonal antibody (M01A), clone S1

Catalog # H00027258-M01A

Size 200 uL

Applications



Western Blot detection against Immunogen (36.96 KDa) .

Specification

Product Description	Mouse monoclonal antibody raised against a full-length recombinant LSM3.
Immunogen	LSM3 (AAH07055, 1 a.a. ~ 102 a.a) full-length recombinant protein with GST tag. MW of the GST tag alone is 26 KDa.
Sequence	MADDVDQQQTNTVEEPLDLIRLSLDERIYVKMRNDRELGRGLHAYDQHLNMILGDVEETVTTIEID EETYEENKSTKRNPMLFVRGDGVVLVAPPLRVG
Host	Mouse
Reactivity	Human
Isotype	IgG1 Kappa
Quality Control Testing	Antibody Reactive Against Recombinant Protein. Western Blot detection against Immunogen (36.96 KDa) .
Storage Buffer	In ascites fluid
Storage Instruction	Store at -20°C or lower. Aliquot to avoid repeated freezing and thawing.

Applications

- Western Blot (Recombinant protein)

[Protocol Download](#)

- ELISA

Gene Info — LSM3

Entrez GeneID [27258](#)

GeneBank Accession# [BC007055](#)

Protein Accession# [AAH07055](#)

Gene Name LSM3

Gene Alias SMX4, USS2, YLR438C

Gene Description LSM3 homolog, U6 small nuclear RNA associated (S. cerevisiae)

Omim ID [607283](#)

Gene Ontology [Hyperlink](#)

Gene Summary Sm-like proteins were identified in a variety of organisms based on sequence homology with the Sm protein family (see SNRPD2; MIM 601061). Sm-like proteins contain the Sm sequence motif, which consists of 2 regions separated by a linker of variable length that folds as a loop. The Sm-like proteins are thought to form a stable heteromer present in tri-snRNP particles, which are important for pre-mRNA splicing.[supplied by OMIM]

Other Designations Lsm3 protein

Pathway

- [RNA degradation](#)

Disease

- [Disease Progression](#)
- [Disease Susceptibility](#)
- [HIV Infections](#)