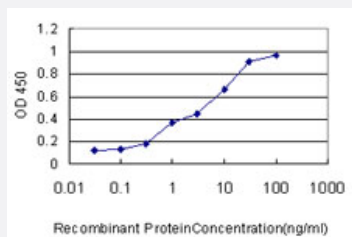


LSM3 monoclonal antibody (M01), clone 4C8-2D10

Catalog # H00027258-M01

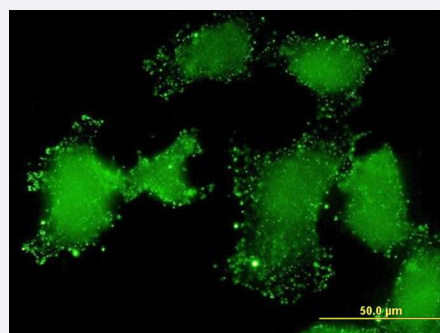
Size 100 ug

Applications



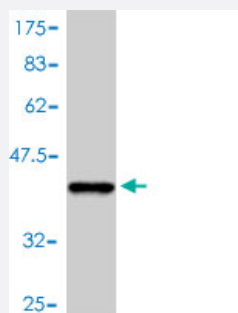
Sandwich ELISA (Recombinant protein)

Detection limit for recombinant GST tagged LSM3 is approximately 1ng/ml as a capture antibody.



Immunofluorescence

Immunofluorescence of monoclonal antibody to LSM3 on HeLa cell . [antibody concentration 10 ug/ml]



Western Blot detection against Immunogen (36.96 KDa) .

Specification

Product Description

Mouse monoclonal antibody raised against a full length recombinant LSM3.

Immunogen	LSM3 (AAH07055, 1 a.a. ~ 102 a.a) full-length recombinant protein with GST tag. MW of the GST tag alone is 26 KDa.
Sequence	MADDVDQQQTNTNTVEEPLDLIRLSLDERIVVKMRNDRELGRGLHAYDQHLNMLGDVEETVTTIEID EETYEENKSTKRNPMLFVRGDGVVLVAPPLRVG
Host	Mouse
Reactivity	Human
Isotype	IgG1 kappa
Quality Control Testing	Antibody Reactive Against Recombinant Protein. Western Blot detection against Immunogen (36.96 KDa) .
Storage Buffer	In 1x PBS, pH 7.4
Storage Instruction	Store at -20°C or lower. Aliquot to avoid repeated freezing and thawing.

Applications

- Western Blot (Recombinant protein)

[Protocol Download](#)

- Sandwich ELISA (Recombinant protein)

Detection limit for recombinant GST tagged LSM3 is approximately 1ng/ml as a capture antibody.

[Protocol Download](#)

- ELISA

- Immunofluorescence

Immunofluorescence of monoclonal antibody to LSM3 on HeLa cell . [antibody concentration 10 ug/ml]

Gene Info — LSM3

Entrez GeneID	27258
GeneBank Accession#	BC007055
Protein Accession#	AAH07055
Gene Name	LSM3

Gene Alias	SMX4, USS2, YLR438C
Gene Description	LSM3 homolog, U6 small nuclear RNA associated (S. cerevisiae)
Omim ID	607283
Gene Ontology	Hyperlink
Gene Summary	Sm-like proteins were identified in a variety of organisms based on sequence homology with the Sm protein family (see SNRPD2; MIM 601061). Sm-like proteins contain the Sm sequence motif, which consists of 2 regions separated by a linker of variable length that folds as a loop. The Sm-like proteins are thought to form a stable heteromer present in tri-snRNP particles, which are important for pre-mRNA splicing.[supplied by OMIM]
Other Designations	Lsm3 protein

Pathway

- [RNA degradation](#)

Disease

- [Disease Progression](#)
- [Disease Susceptibility](#)
- [HIV Infections](#)