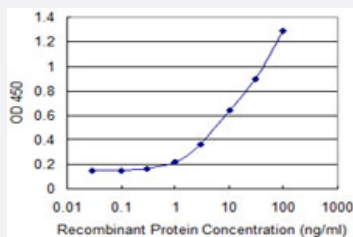


LSM1 monoclonal antibody (M07), clone 4F7

Catalog # H00027257-M07

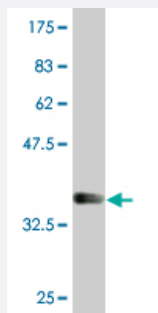
Size 100 ug

Applications



Sandwich ELISA (Recombinant protein)

Detection limit for recombinant GST tagged LSM1 is 0.3 ng/ml as a capture antibody.



Western Blot detection against Immunogen (36.74 KDa) .

Specification

Product Description	Mouse monoclonal antibody raised against a partial recombinant LSM1.
Immunogen	LSM1 (NP_055277.1, 34 a.a. ~ 133 a.a) partial recombinant protein with GST tag. MW of the GST tag alone is 26 KDa.
Sequence	SIDQFANLVLHQTVERIHVGKKYGDIPRGIFVVRGENVVLLGEIDLEKESDTPLQQVSIEEILEEQRV EQQTKLEAEKLVQALKDRGLSIPRADTLDEY
Host	Mouse
Reactivity	Human

Interspecies Antigen Sequence	Mouse (97); Rat (97)
Isotype	IgG2a Kappa
Quality Control Testing	Antibody Reactive Against Recombinant Protein. Western Blot detection against Immunogen (36.74 KDa) .
Storage Buffer	In 1x PBS, pH 7.4
Storage Instruction	Store at -20°C or lower. Aliquot to avoid repeated freezing and thawing.

Applications

- Western Blot (Recombinant protein)

[Protocol Download](#)

- Sandwich ELISA (Recombinant protein)

Detection limit for recombinant GST tagged LSM1 is 0.3 ng/ml as a capture antibody.

[Protocol Download](#)

- ELISA

Gene Info — LSM1

Entrez GeneID	27257
GeneBank Accession#	NM_014462
Protein Accession#	NP_055277.1
Gene Name	LSM1
Gene Alias	CASM, YJL124C
Gene Description	LSM1 homolog, U6 small nuclear RNA associated (S. cerevisiae)
Omim ID	607281
Gene Ontology	Hyperlink

Gene Summary

Sm-like proteins were identified in a variety of organisms based on sequence homology with the Sm protein family (see SNRPD2; MIM 601061). Sm-like proteins contain the Sm sequence motif, which consists of 2 regions separated by a linker of variable length that folds as a loop. The Sm-like proteins are thought to form a stable heteromer present in tri-snRNP particles, which are important for pre-mRNA splicing.[supplied by OMIM]

Other Designations

Lsm1 protein

Pathway

- [RNA degradation](#)

Disease

- [Kidney Failure](#)
- [Tobacco Use Disorder](#)