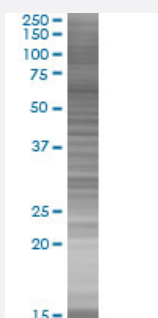


KLHL20 293T Cell Transient Overexpression Lysate(Denatured)

Catalog # H00027252-T01

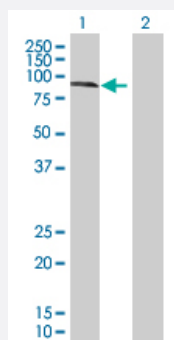
Size 100 uL

Applications



SDS-PAGE Gel

KLHL20 transfected lysate.



Western Blot

Lane 1: KLHL20 transfected lysate (67.1 KDa)

Lane 2: Non-transfected lysate.

Specification

Transfected Cell Line	293T
Plasmid	pCMV-KLHL20 full-length
Host	Human
Theoretical MW (kDa)	67.1
Interspecies Antigen Sequence	Mouse (100); Rat (100)

Quality Control Testing

Transient overexpression cell lysate was tested with Anti-KLHL20 antibody ([H00027252-B01](#)) by Western Blots.
SDS-PAGE Gel
KLHL20 transfected lysate.
Western Blot
Lane 1: KLHL20 transfected lysate (67.1 KDa)
Lane 2: Non-transfected lysate.

Storage Buffer

1X Sample Buffer (50 mM Tris-HCl, 2% SDS, 10% glycerol, 300 mM 2-mercaptoethanol, 0.01% Bromophenol blue)

Storage Instruction

Store at -80°C. Aliquot to avoid repeated freezing and thawing.

Applications

- Western Blot

Gene Info — KLHL20

Entrez GeneID

[27252](#)

GeneBank Accession#

[NM_014458.3](#)

Protein Accession#

-

Gene Name

KLHL20

Gene Alias

KHLHX, KLEIP, KLHLX, RP3-383J4.3

Gene Description

kelch-like 20 (Drosophila)

Gene Ontology

[Hyperlink](#)

Gene Summary

The protein encoded by this gene is a member of the kelch family of proteins, which is characterized by a 44-56 amino acid repeat motif. The kelch motif appears in many different polypeptide contexts and contains multiple potential protein-protein contact sites. Members of this family are present both throughout the cell and extracellularly, with diverse activities. [provided by RefSeq]

Other Designations

Kelch motif containing protein|OTTHUMP00000038347|kelch-like 20|kelch-like ECT2 interacting protein