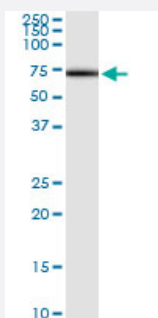


SESN1 (Human) IP-WB Antibody Pair

Catalog # H00027244-PW1

Size 1 Set

Applications



Immunoprecipitation of SESN1 transfected lysate using rabbit polyclonal anti-SESN1 and Protein A Magnetic Bead ([U0007](#)), and immunoblotted with mouse purified polyclonal anti-SESN1.

Specification

Product Description	This IP-WB antibody pair set comes with one antibody for immunoprecipitation and another to detect the precipitated protein in western blot.
Reactivity	Human
Interspecies Antigen Sequence	Mouse (95); Rat (95)
Quality Control Testing	Immunoprecipitation-Western Blot (IP-WB) Immunoprecipitation of SESN1 transfected lysate using rabbit polyclonal anti-SESN1 and Protein A Magnetic Bead (U0007), and immunoblotted with mouse purified polyclonal anti-SESN1.
Supplied Product	Antibody pair set content: 1. Antibody pair for IP: rabbit polyclonal anti-SESN1 (300 ul) 2. Antibody pair for WB: mouse purified polyclonal anti-SESN1 (50 ug)
Storage Instruction	Store reagents of the antibody pair set at -20°C or lower. Please aliquot to avoid repeated freeze thaw cycle. Reagents should be returned to -20°C storage immediately after use.

Applications

- Immunoprecipitation-Western Blot

[Protocol Download](#)

Gene Info — SESN1

Entrez GeneID [27244](#)

Gene Name SESN1

Gene Alias MGC138241, MGC142129, PA26, RP11-787I22.1, SEST1

Gene Description sestrin 1

Omim ID [606103](#)

Gene Ontology [Hyperlink](#)

Other Designations OTTHUMP00000016951|OTTHUMP00000016953|p53 regulated PA26 nuclear protein

Pathway

- [p53 signaling pathway](#)