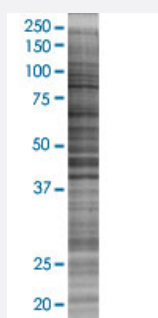


CHMP2A 293T Cell Transient Overexpression Lysate(Denatured)

Catalog # H00027243-T03

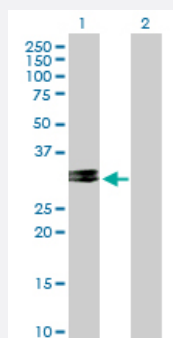
Size 100 uL

Applications



SDS-PAGE Gel

CHMP2A transfected lysate.



Western Blot

Lane 1: CHMP2A transfected lysate (24.42 KDa)

Lane 2: Non-transfected lysate.

Specification

Transfected Cell Line	293T
Plasmid	pCMV-CHMP2A full-length
Host	Human
Theoretical MW (kDa)	24.42
Interspecies Antigen Sequence	Mouse (99); Rat (99)

Quality Control Testing

Transient overexpression cell lysate was tested with Anti-CHMP2A antibody ([H00027243-B01P](#)) by Western Blots.
SDS-PAGE Gel
CHMP2A transfected lysate.
Western Blot
Lane 1: CHMP2A transfected lysate (24.42 KDa)
Lane 2: Non-transfected lysate.

Storage Buffer

1X Sample Buffer (50 mM Tris-HCl, 2% SDS, 10% glycerol, 300 mM 2-mercaptoethanol, 0.01% Bromophenol blue)

Storage Instruction

Store at -80°C. Aliquot to avoid repeated freezing and thawing.

Applications

- Western Blot

Gene Info — CHMP2A

Entrez GeneID

[27243](#)

GeneBank Accession#

[BC002502](#)

Protein Accession#

[AAH02502](#)

Gene Name

CHMP2A

Gene Alias

BC-2, BC2, CHMP2, VPS2, VPS2A

Gene Description

chromatin modifying protein 2A

Omim ID

[610893](#)

Gene Ontology

[Hyperlink](#)

Gene Summary

CHMP2A belongs to the chromatin-modifying protein/charged multivesicular body protein (CHMP) family. These proteins are components of ESCRT-III (endosomal sorting complex required for transport III), a complex involved in degradation of surface receptor proteins and formation of endocytic multivesicular bodies (MVBs). Some CHMPs have both nuclear and cytoplasmic/vesicular distributions, and one such CHMP, CHMP1A (MIM 164010), is required for both MVB formation and regulation of cell cycle progression (Tsang et al., 2006 [PubMed 16730941]).[supplied by OMIM]

Other Designations

putative breast adenocarcinoma marker (32kD)

Pathway

- [Endocytosis](#)