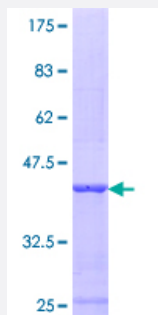


SULT1C2 (Human) Recombinant Protein (Q01)

Catalog # H00027233-Q01

Size 25 ug, 10 ug

Applications



Specification

Product Description	Human SULT1C2 partial ORF (AAH58861.1, 1 a.a. - 102 a.a.) recombinant protein with GST-tag at N-terminal.
Sequence	MALHDMEDFTFDGKRLSVNYVKGILQPTDTCDIWDKIWNFQAKPDDLLISTYPKAGTTWTQEIVE LIQNEGDVEKSKRAPHQRFPFLEMKIPSLGSGEYK
Host	Wheat Germ (in vitro)
Theoretical MW (kDa)	36.96
Preparation Method	in vitro wheat germ expression system
Purification	Glutathione Sepharose 4 Fast Flow
Quality Control Testing	12.5% SDS-PAGE Stained with Coomassie Blue.
Storage Buffer	50 mM Tris-HCl, 10 mM reduced Glutathione, pH=8.0 in the elution buffer.
Storage Instruction	Store at -80°C. Aliquot to avoid repeated freezing and thawing.
Note	Best use within three months from the date of receipt of this protein.

Applications

- Enzyme-linked Immunoabsorbent Assay
- Western Blot (Recombinant protein)
- Antibody Production
- Protein Array

Gene Info — SULT1C4

Entrez GeneID [27233](#)

GeneBank Accession# [BC058861](#)

Protein Accession# [AAH58861.1](#)

Gene Name SULT1C4

Gene Alias MGC149521, MGC34422, SULT1C, SULT1C2

Gene Description sulfotransferase family, cytosolic, 1C, member 4

Omim ID [608357](#)

Gene Ontology [Hyperlink](#)

Gene Summary Sulfotransferase enzymes catalyze the sulfate conjugation of many hormones, neurotransmitters, drugs, and xenobiotic compounds. These cytosolic enzymes are different in their tissue distributions and substrate specificities. The gene structure (number and length of exons) is similar among family members. This gene encodes a protein that belongs to the SULT1 subfamily, responsible for transferring a sulfo moiety from PAPS to phenol-containing compounds. [provided by RefSeq]

Other Designations sulfotransferase 1C2|sulfotransferase family, cytosolic, 1C, member 2|sulfotransferase family, cytosolic, 1C, member C2