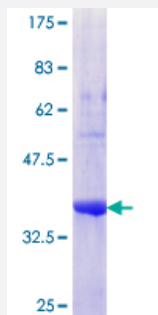


# RTDR1 (Human) Recombinant Protein (Q01)

Catalog # H00027156-Q01

Size 25 ug, 10 ug

## Applications



## Specification

|                                      |   |
|--------------------------------------|---|
| <b>Product Description</b>           | Human RTDR1 partial ORF ( NP_055248.1, 249 a.a. - 348 a.a.) recombinant protein with GST-tag at N-terminal. |
| <b>Sequence</b>                      | SNAAGALMFATVITEGKYAALEAQAIGLLLELLHSPMTIARLNATKALTMLAEAPEGRKALQTHVPT<br>FRAMEVETYEKPVAEALQRAARIAISVIEFKP     |
| <b>Host</b>                          | Wheat Germ (in vitro)   |
| <b>Theoretical MW (kDa)</b>          | 36.74   |
| <b>Interspecies Antigen Sequence</b> | Mouse (63); Rat (63)  |
| <b>Preparation Method</b>            | <a href="#">in vitro wheat germ expression system</a>   |
| <b>Purification</b>                  | Glutathione Sepharose 4 Fast Flow   |
| <b>Quality Control Testing</b>       | 12.5% SDS-PAGE Stained with Coomassie Blue.   |
| <b>Storage Buffer</b>                | 50 mM Tris-HCl, 10 mM reduced Glutathione, pH=8.0 in the elution buffer.                                    |
| <b>Storage Instruction</b>           | Store at -80°C. Aliquot to avoid repeated freezing and thawing.   |
| <b>Note</b>                          | Best use within three months from the date of receipt of this protein.                                      |

## Applications

- Enzyme-linked Immunoabsorbent Assay
- Western Blot (Recombinant protein)
- Antibody Production
- Protein Array

## Gene Info — RTDR1

|               |                       |
|---------------|-----------------------|
| Entrez GeneID | <a href="#">27156</a> |
|---------------|-----------------------|

|                     |                           |
|---------------------|---------------------------|
| GeneBank Accession# | <a href="#">NM_014433</a> |
|---------------------|---------------------------|

|                    |                             |
|--------------------|-----------------------------|
| Protein Accession# | <a href="#">NP_055248.1</a> |
|--------------------|-----------------------------|

|           |       |
|-----------|-------|
| Gene Name | RTDR1 |
|-----------|-------|

|            |          |
|------------|----------|
| Gene Alias | MGC16968 |
|------------|----------|

|                  |                                       |
|------------------|---------------------------------------|
| Gene Description | rhabdoid tumor deletion region gene 1 |
|------------------|---------------------------------------|

|         |                        |
|---------|------------------------|
| Omim ID | <a href="#">605663</a> |
|---------|------------------------|

|               |                           |
|---------------|---------------------------|
| Gene Ontology | <a href="#">Hyperlink</a> |
|---------------|---------------------------|

|              |   |
|--------------|---|
| Gene Summary | This gene encodes a protein with no known function but with slight similarity to a yeast vacuolar protein. The gene is located in a region deleted in pediatric rhabdoid tumors of the brain, kidney and soft tissues, but mutations in this gene have not been associated with the disease. [provided by RefSeq] |
|--------------|---|

|                    |  |
|--------------------|--|
| Other Designations | rhabdoid tumor deletion region protein 1 |
|--------------------|--|