

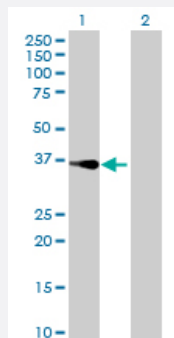
MaxPab®

RTDR1 MaxPab mouse polyclonal antibody (B01P)

Catalog # H00027156-B01P

Size 50 ug

Applications



Western Blot (Transfected lysate)

Western Blot analysis of RTDR1 expression in transfected 293T cell line ([H00027156-T01](#)) by RTDR1 MaxPab polyclonal antibody.

Lane 1: RTDR1 transfected lysate(38.28 KDa).

Lane 2: Non-transfected lysate.

Specification

Product Description	Mouse polyclonal antibody raised against a full-length human RTDR1 protein.
Immunogen	RTDR1 (NP_055248, 1 a.a. ~ 348 a.a) full-length human protein.
Sequence	MAHSQNSLELPININATQITTAYGHRALPKLKEELQSEDLQTRQKALMALCDLMHDPECYKAMNIG CMENLKALLKDSNSMVRITTEVLHITASHSVGRYAFLEHDMVLALSFLINDPSPVCRGNLYKAYM QLVQVPRGAQEISKGLISSLVWKLQVEVEEEEFQEFILDTLVLCQEDATEALGSNNVVLVKQKLL SANQNIRSKAARALLNVSISREGKKQVCHFDVIPILVHLLKDPVEHVKSNAAGALMFATVITEGKYA ALEAQAIGLLLELLHSPMTIARLNATKALTMLAEAPEGRKALQTHVPTFRAMEVETYEKPQVAEAL QRAARIAISVIEFKP
Host	Mouse
Reactivity	Human
Interspecies Antigen Sequence	Mouse (63); Rat (63)
Quality Control Testing	Antibody reactive against mammalian transfected lysate.
Storage Buffer	In 1x PBS, pH 7.4

Storage Instruction

Store at -20°C or lower. Aliquot to avoid repeated freezing and thawing.

Applications

- Western Blot (Transfected lysate)

Western Blot analysis of RTDR1 expression in transfected 293T cell line ([H00027156-T01](#)) by RTDR1 MaxPab polyclonal antibody.

Lane 1: RTDR1 transfected lysate(38.28 KDa).

Lane 2: Non-transfected lysate.

[Protocol Download](#)

Gene Info — RTDR1

Entrez GeneID	27156
---------------	-----------------------

GeneBank Accession#	NM_014433
---------------------	---------------------------

Protein Accession#	NP_055248
--------------------	---------------------------

Gene Name	RTDR1
-----------	-------

Gene Alias	MGC16968
------------	----------

Gene Description	rhabdoid tumor deletion region gene 1
------------------	---------------------------------------

Omim ID	605663
---------	------------------------

Gene Ontology	Hyperlink
---------------	---------------------------

Gene Summary	This gene encodes a protein with no known function but with slight similarity to a yeast vacuolar protein. The gene is located in a region deleted in pediatric rhabdoid tumors of the brain, kidney and soft tissues, but mutations in this gene have not been associated with the disease. [provided by RefSeq]
--------------	-------------------------------------------------------------------------------------------------------------------------------------------------------------------------------------------------------------------------------------------------------------------------------------------------------------------

Other Designations	rhabdoid tumor deletion region protein 1
--------------------	------------------------------------------