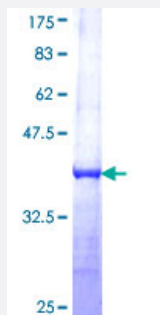


MORC1 (Human) Recombinant Protein (Q01)

Catalog # H00027136-Q01

Size 25 ug, 10 ug

Applications



Specification

Product Description	Human MORC1 partial ORF (NP_055244, 1 a.a. - 100 a.a.) recombinant protein with GST-tag at N-terminal.
Sequence	MDDRYPALQRAQLRLDFIHANSTTHSFLFGALAEELDNARDAGAERLDVFSVDNEKLQGGFMLC FLDDGCGMSPEEASDIYFGRSKKRLSTLKFIGQYG
Host	Wheat Germ (in vitro)
Theoretical MW (kDa)	36.74
Interspecies Antigen Sequence	Mouse (66); Rat (67)
Preparation Method	in vitro wheat germ expression system
Purification	Glutathione Sepharose 4 Fast Flow
Quality Control Testing	12.5% SDS-PAGE Stained with Coomassie Blue.
Storage Buffer	50 mM Tris-HCl, 10 mM reduced Glutathione, pH=8.0 in the elution buffer.
Storage Instruction	Store at -80°C. Aliquot to avoid repeated freezing and thawing.
Note	Best use within three months from the date of receipt of this protein.

Applications

- Enzyme-linked Immunoabsorbent Assay
- Western Blot (Recombinant protein)
- Antibody Production
- Protein Array

Gene Info — MORC1

Entrez GeneID [27136](#)

GeneBank Accession# [NM_014429](#)

Protein Accession# [NP_055244](#)

Gene Name MORC1

Gene Alias MORC, ZCW6

Gene Description MORC family CW-type zinc finger 1

Omim ID [603205](#)

Gene Ontology [Hyperlink](#)

Gene Summary This gene encodes the human homolog of mouse morc and like the mouse protein it is testis-specific. Mouse studies support a testis-specific function since only male knockout mice are infertile; infertility is the only apparent defect. These studies further support a role for this protein early in spermatogenesis, possibly by affecting entry into apoptosis because testis from knockout mice show greatly increased numbers of apoptotic cells. [provided by RefSeq]

Other Designations microrchidia homolog|microrchidia, mouse, homolog of|microrchidia, mouse, homolog of

Disease

- [Tobacco Use Disorder](#)