

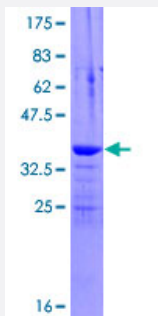
Full-Length

INVS (Human) Recombinant Protein (P02)

Catalog # H00027130-P02

Size 25 ug, 10 ug

Applications



Specification

Product Description	Human INVS full-length ORF (ENSP00000364056, 1 a.a. - 101 a.a.) recombinant protein with GST-tag at N-terminal.
Sequence	MNKSENLLFAGSSLASQVHAAAVNGDKGALQRLVGNLSALKDKEDQFGRTPLMYCVLADRLDCA DALLKAGADVNKTDHSQRTALHLAAQKALRTISTGRI
Host	Wheat Germ (in vitro)
Theoretical MW (kDa)	37.1
Interspecies Antigen Sequence	Mouse (90); Rat (94)
Preparation Method	in vitro wheat germ expression system
Purification	Glutathione Sepharose 4 Fast Flow
Quality Control Testing	12.5% SDS-PAGE Stained with Coomassie Blue.
Storage Buffer	50 mM Tris-HCl, 10 mM reduced Glutathione, pH=8.0 in the elution buffer.
Storage Instruction	Store at -80°C. Aliquot to avoid repeated freezing and thawing.
Note	Best use within three months from the date of receipt of this protein.

Applications

- Enzyme-linked Immunoabsorbent Assay
- Western Blot (Recombinant protein)
- Antibody Production
- Protein Array

Gene Info — INVS

Entrez GeneID [27130](#)

GeneBank Accession# [ENST00000374921](#)

Protein Accession# [ENSP00000364056](#)

Gene Name INVS

Gene Alias INV, KIAA0573, MGC133080, MGC133081, NPH2, NPHP2

Gene Description inversin

Omim ID [243305 602088](#)

Gene Ontology [Hyperlink](#)

Gene Summary This gene encodes a protein containing multiple ankyrin domains and two IQ calmodulin-binding domains. The encoded protein may function in renal tubular development and function, and in left-right axis determination. This protein interacts with nephrocystin and infers a connection between primary cilia function and left-right axis determination. A similar protein in mice interacts with calmodulin. Mutations in this gene have been associated with nephronophthisis type 2. Two transcript variants encoding distinct isoforms have been identified for this gene. [provided by RefSeq]

Other Designations OTTHUMP00000021790|OTTHUMP00000063824|inversion of embryonic turning