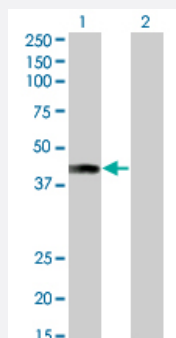


AFF4 monoclonal antibody (M01), clone 2E12

Catalog # H00027125-M01

Size 100 ug

Applications

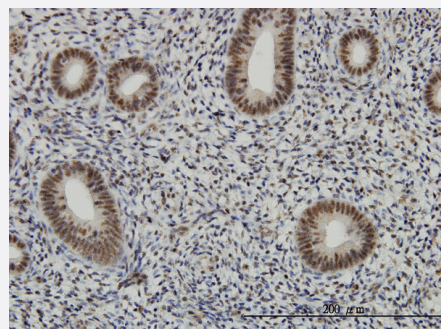


Western Blot (Transfected lysate)

Western Blot analysis of AFF4 expression in transfected 293T cell line by AFF4 monoclonal antibody (M01), clone 2E12.

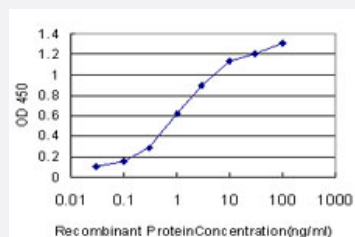
Lane 1: AFF4 transfected lysate(40.2 KDa).

Lane 2: Non-transfected lysate.



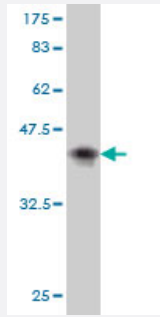
Immunohistochemistry (Formalin/PFA-fixed paraffin-embedded sections)

Immunoperoxidase of monoclonal antibody to AFF4 on formalin-fixed paraffin-embedded human endometrium. [antibody concentration 1 ug/ml]



Sandwich ELISA (Recombinant protein)

Detection limit for recombinant GST tagged AFF4 is approximately 0.03ng/ml as a capture antibody.



Western Blot detection against Immunogen (37.62 KDa) .

Specification

Product Description	Mouse monoclonal antibody raised against a partial recombinant AFF4.
Immunogen	AFF4 (NP_055238, 1 a.a. ~ 108 a.a) partial recombinant protein with GST tag. MW of the GST tag alone is 26 KDa.
Sequence	MNREDRNVLRMKERERRNQEIQQGEDAFPPSSPLFAEPYKVTSKEDKLSSRIQSMLGNYDEMKD FIGDRSIPKLVAIPKPTVPPSADEKSNPNFFEQRHGGSHQSSKW
Host	Mouse
Reactivity	Human
Interspecies Antigen Sequence	Mouse (92); Rat (92)
Isotype	IgG1 Kappa
Quality Control Testing	Antibody Reactive Against Recombinant Protein. Western Blot detection against Immunogen (37.62 KDa) .
Storage Buffer	In 1x PBS, pH 7.4
Storage Instruction	Store at -20°C or lower. Aliquot to avoid repeated freezing and thawing.

Applications

● Western Blot (Transfected lysate)

Western Blot analysis of AFF4 expression in transfected 293T cell line by AFF4 monoclonal antibody (M01), clone 2E12.

Lane 1: AFF4 transfected lysate(40.2 KDa).

Lane 2: Non-transfected lysate.

[Protocol Download](#)

- Western Blot (Recombinant protein)

[Protocol Download](#)

- Immunohistochemistry (Formalin/PFA-fixed paraffin-embedded sections)

Immunoperoxidase of monoclonal antibody to AFF4 on formalin-fixed paraffin-embedded human endometrium. [antibody concentration 1 ug/ml]

[Protocol Download](#)

- Sandwich ELISA (Recombinant protein)

Detection limit for recombinant GST tagged AFF4 is approximately 0.03ng/ml as a capture antibody.

[Protocol Download](#)

- ELISA

Gene Info — AFF4

Entrez GeneID [27125](#)

GeneBank Accession# [NM_014423](#)

Protein Accession# [NP_055238](#)

Gene Name AFF4

Gene Alias AF5Q31, MCEF, MGC75036

Gene Description AF4/FMR2 family, member 4

Omim ID [604417](#)

Gene Ontology [Hyperlink](#)

Gene Summary O

Other Designations ALL1 fused gene from 5q31

Disease

- [Tobacco Use Disorder](#)