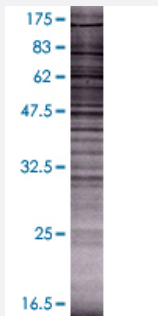


# DKKL1 293T Cell Transient Overexpression Lysate(Denatured)

Catalog # H00027120-T01

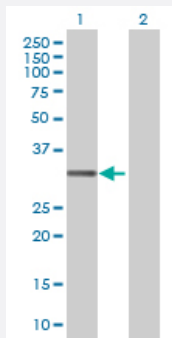
Size 100 uL

## Applications



### SDS-PAGE Gel

DKKL1 transfected lysate.



### Western Blot

Lane 1: DKKL1 transfected lysate ( 26.73 KDa)

Lane 2: Non-transfected lysate.

## Specification

Transfected Cell Line	293T
Plasmid	pCMV-DKKL1 full-length
Host	Human
Theoretical MW (kDa)	26.73
Interspecies Antigen Sequence	Mouse (63); Rat (65)

**Quality Control Testing**

Transient overexpression cell lysate was tested with Anti-DKKL1 antibody ([H00027120-B01](#)) by Western Blots.  
SDS-PAGE Gel  
DKKL1 transfected lysate.  
Western Blot  
Lane 1: DKKL1 transfected lysate ( 26.73 KDa)  
Lane 2: Non-transfected lysate.

**Storage Buffer**

1X Sample Buffer (50 mM Tris-HCl, 2% SDS, 10% glycerol, 300 mM 2-mercaptoethanol, 0.01% Bromophenol blue)

**Storage Instruction**

Store at -80°C. Aliquot to avoid repeated freezing and thawing.

## Applications

- Western Blot

## Gene Info — DKKL1

**Entrez GeneID**[27120](#)**GeneBank Accession#**[NM\\_014419.3](#)**Protein Accession#**[NP\\_055234.1](#)**Gene Name**

DKKL1

**Gene Alias**

SGY, SGY-1, SGY1

**Gene Description**

dickkopf-like 1 (soggy)

**Omim ID**[605418](#)**Gene Ontology**[Hyperlink](#)**Gene Summary**

The dickkopf protein family interacts with the Wnt signaling pathway and its members are characterized by two conserved cysteine-rich domains. This gene encodes a secreted protein that has high similarity to the N-terminus of the dickkopf-3 protein and moderate similarity to that protein's C-terminus though the C-terminal cysteine residues are not conserved. [provided by RefSeq]

**Other Designations**

dickkopf-like 1|soggy-1