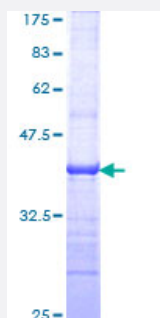


TAF5L (Human) Recombinant Protein (Q01)

Catalog # H00027097-Q01

Size 25 ug, 10 ug

Applications



Specification

Product Description	Human TAF5L partial ORF (NP_055224, 1 a.a. - 117 a.a.) recombinant protein with GST-tag at N-terminal.
Sequence	MKRVRTEQIQMAVSCYLKRRQYVDSGGLKQGLRLSQTAEEAANLTVQSESGCANIVSAAPCQ AEPQQYEVQFGRLRNFLTSDSQHSHEVMPLLYPLFVYLHLNLVQNSPKSTVE
Host	Wheat Germ (in vitro)
Theoretical MW (kDa)	38.61
Interspecies Antigen Sequence	Mouse (92); Rat (91)
Preparation Method	in vitro wheat germ expression system
Purification	Glutathione Sepharose 4 Fast Flow
Quality Control Testing	12.5% SDS-PAGE Stained with Coomassie Blue.
Storage Buffer	50 mM Tris-HCl, 10 mM reduced Glutathione, pH=8.0 in the elution buffer.
Storage Instruction	Store at -80°C. Aliquot to avoid repeated freezing and thawing.
Note	Best use within three months from the date of receipt of this protein.

Applications

- Enzyme-linked Immunoabsorbent Assay
- Western Blot (Recombinant protein)
- Antibody Production
- Protein Array

Gene Info — TAF5L

Entrez GeneID	27097
GeneBank Accession#	NM_014409
Protein Accession#	NP_055224
Gene Name	TAF5L
Gene Alias	PAF65B
Gene Description	TAF5-like RNA polymerase II, p300/CBP-associated factor (PCAF)-associated factor, 65kDa
Gene Ontology	Hyperlink
Gene Summary	The product of this gene belongs to the WD-repeat TAF5 family of proteins. This gene encodes a protein that is a component of the PCAF histone acetylase complex. The PCAF histone acetylase complex, which is composed of more than 20 polypeptides some of which are TAFs, is required for myogenic transcription and differentiation. TAFs may participate in basal transcription, serve as coactivators, function in promoter recognition or modify general transcription factors to facilitate complex assembly and transcription initiation. The encoded protein is structurally similar to one of the histone-like TAFs, TAF5. Alternatively spliced transcript variants encoding different isoforms have been identified for this gene. [provided by RefSeq]
Other Designations	OTTHUMP00000037470 OTTHUMP00000037471 PCAF associated factor 65 beta TAF5-like RNA polymerase II, p300/CBP-associated factor (PCAF)-associated factor, 65 kD

Pathway

- [Basal transcription factors](#)

Disease

- [Diabetes Mellitus](#)
- [Genetic Predisposition to Disease](#)