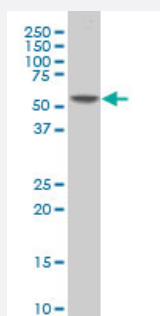


# TAF5L polyclonal antibody (A01)

Catalog # H00027097-A01

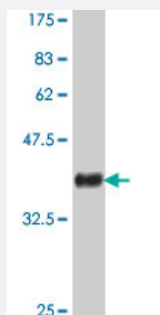
Size 50 uL

## Applications



### Western Blot (Cell lysate)

TAF5L polyclonal antibody (A01), Lot # 051018JC01 Western Blot analysis of TAF5L expression in SJCRH30 ( Cat # L027V1 ).



Western Blot detection against Immunogen (38.98 KDa) .

## Specification

Product Description	Mouse polyclonal antibody raised against a partial recombinant TAF5L.
Immunogen	TAF5L (NP_055224, 1 a.a. ~ 117 a.a) partial recombinant protein with GST tag.
Sequence	MKRVRTQIQMAVSCYLKRRQYVDSGGLKQGLRLSQTAEMAANLTVQSESGCANIVSAAPCQ AEPQQYEVQFGRLRNFLTSDSQHSHEVMPLLYPLFVYLHLNLVQNPKSTVE
Host	Mouse
Reactivity	Human
Interspecies Antigen Sequence	Mouse (92); Rat (91)

**Quality Control Testing**

Antibody Reactive Against Recombinant Protein.  
Western Blot detection against Immunogen (38.98 KDa) .

**Storage Buffer**

50 % glycerol

**Storage Instruction**

Store at -20°C or lower. Aliquot to avoid repeated freezing and thawing.

## Applications

- Western Blot (Cell lysate)

TAF5L polyclonal antibody (A01), Lot # 051018JC01 Western Blot analysis of TAF5L expression in SJCRH30 ( Cat # L027V1 ).

[Protocol Download](#)

- Western Blot (Recombinant protein)

[Protocol Download](#)

- ELISA

## Gene Info — TAF5L

**Entrez GeneID**

[27097](#)

**GeneBank Accession#**

[NM\\_014409](#)

**Protein Accession#**

[NP\\_055224](#)

**Gene Name**

TAF5L

**Gene Alias**

PAF65B

**Gene Description**

TAF5-like RNA polymerase II, p300/CBP-associated factor (PCAF)-associated factor, 65kDa

**Gene Ontology**

[Hyperlink](#)

**Gene Summary**

The product of this gene belongs to the WD-repeat TAF5 family of proteins. This gene encodes a protein that is a component of the PCAF histone acetylase complex. The PCAF histone acetylase complex, which is composed of more than 20 polypeptides some of which are TAFs, is required for myogenic transcription and differentiation. TAFs may participate in basal transcription, serve as coactivators, function in promoter recognition or modify general transcription factors to facilitate complex assembly and transcription initiation. The encoded protein is structurally similar to one of the histone-like TAFs, TAF5. Alternatively spliced transcript variants encoding different isoforms have been identified for this gene. [provided by RefSeq]

**Other Designations**

OTTHUMP00000037470|OTTHUMP00000037471|PCAF associated factor 65 beta|TAF5-like R  
NA polymerase II, p300/CBP-associated factor (PCAF)-associated factor, 65 kD

**Pathway**

- [Basal transcription factors](#)

**Disease**

- [Diabetes Mellitus](#)
- [Genetic Predisposition to Disease](#)