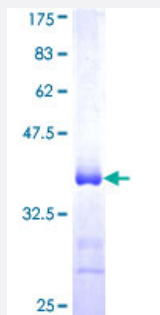


VPS41 (Human) Recombinant Protein (Q01)

Catalog # H00027072-Q01

Size 25 ug, 10 ug

Applications



Specification

Product Description	Human VPS41 partial ORF (NP_055211, 755 a.a. - 853 a.a.) recombinant protein with GST-tag at N-terminal.
Sequence	LLREGCKKILVADSLSLKKMHRTQMKGVLVDEENICESCLSPILPSDAAKPFSVVVFHCRHMFH KECLPMPMSMNSAAQFCNCSAKNRGPGSAILEMK
Host	Wheat Germ (in vitro)
Theoretical MW (kDa)	36.63
Preparation Method	in vitro wheat germ expression system
Purification	Glutathione Sepharose 4 Fast Flow
Quality Control Testing	12.5% SDS-PAGE Stained with Coomassie Blue.
Storage Buffer	50 mM Tris-HCl, 10 mM reduced Glutathione, pH=8.0 in the elution buffer.
Storage Instruction	Store at -80°C. Aliquot to avoid repeated freezing and thawing.
Note	Best use within three months from the date of receipt of this protein.

Applications

- Enzyme-linked Immunoabsorbent Assay
- Western Blot (Recombinant protein)
- Antibody Production
- Protein Array

Gene Info — VPS41

Entrez GeneID [27072](#)

GeneBank Accession# [NM_014396](#)

Protein Accession# [NP_055211](#)

Gene Name VPS41

Gene Alias HVPS41, HVSP41, hVps41p

Gene Description vacuolar protein sorting 41 homolog (S. cerevisiae)

Omim ID [605485](#)

Gene Ontology [Hyperlink](#)

Gene Summary Vesicle mediated protein sorting plays an important role in segregation of intracellular molecules into distinct organelles. Genetic studies in yeast have identified more than 40 vacuolar protein sorting (VPS) genes involved in vesicle transport to vacuoles. This gene encodes the human ortholog of yeast Vps41 protein which is also conserved in Drosophila, tomato, and Arabidopsis. Expression studies in yeast and human indicate that this protein may be involved in the formation and fusion of transport vesicles from the Golgi. Several transcript variants encoding different isoforms have been described for this gene, however, the full-length nature of not all is known. [provided by RefSeq]

Other Designations OTTHUMP00000025247|vacuolar assembly protein 41|vacuolar protein sorting 41

Disease

- [Tobacco Use Disorder](#)