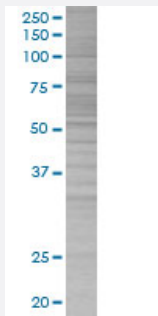


PPA2 293T Cell Transient Overexpression Lysate(Denatured)

Catalog # H00027068-T01

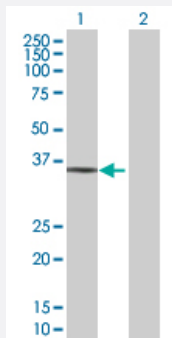
Size 100 uL

Applications



SDS-PAGE Gel

PPA2 transfected lysate.



Western Blot

Lane 1: PPA2 transfected lysate (37.9 KDa)

Lane 2: Non-transfected lysate.

Specification

Transfected Cell Line	293T
Plasmid	pCMV-PPA2 full-length
Host	Human
Theoretical MW (kDa)	37.9
Interspecies Antigen Sequence	Mouse (75); Rat (74)

Quality Control Testing

Transient overexpression cell lysate was tested with Anti-PPA2 antibody ([H00027068-B01](#)) by Western Blots.
SDS-PAGE Gel
PPA2 transfected lysate.
Western Blot
Lane 1: PPA2 transfected lysate (37.9 KDa)
Lane 2: Non-transfected lysate.

Storage Buffer

1X Sample Buffer (50 mM Tris-HCl, 2% SDS, 10% glycerol, 300 mM 2-mercaptoethanol, 0.01% Bromophenol blue)

Storage Instruction

Store at -80°C. Aliquot to avoid repeated freezing and thawing.

Applications

- Western Blot

Gene Info — PPA2

Entrez GeneID

[27068](#)

GeneBank Accession#

[NM_176869.2](#)

Protein Accession#

-

Gene Name

PPA2

Gene Alias

FLJ20459, HSPC124, MGC49850, SID6-306

Gene Description

pyrophosphatase (inorganic) 2

Omim ID

[609988](#)

Gene Ontology

[Hyperlink](#)

Gene Summary

The protein encoded by this gene is localized to the mitochondrion, is highly similar to members of the inorganic pyrophosphatase (PPase) family, and contains the signature sequence essential for the catalytic activity of PPase. PPases catalyze the hydrolysis of pyrophosphate to inorganic phosphate, which is important for the phosphate metabolism of cells. Alternate transcriptional splice variants, encoding different isoforms, have been characterized. [provided by RefSeq]

Other Designations

inorganic pyrophosphatase 2

Pathway

- [Oxidative phosphorylation](#)

Disease

- [Alcoholism](#)
- [Genetic Predisposition to Disease](#)
- [Tobacco Use Disorder](#)