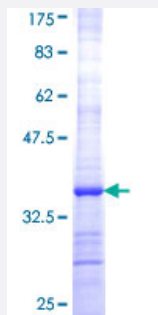


PPA2 (Human) Recombinant Protein (Q01)

Catalog # H00027068-Q01

Size 25 ug, 10 ug

Applications



Specification

Product Description	Human PPA2 partial ORF (NP_789845, 1 a.a. - 90 a.a.) recombinant protein with GST-tag at N-terminal.
Sequence	MSALLRLLRTGAPAAACLRRLGTSAGTGSRRAMALYHTEERGQPCSQNYRLFFKNVTGHYISPFHDI PLKVNSKEENGIPMKKARNDYEN
Host	Wheat Germ (in vitro)
Theoretical MW (kDa)	35.64
Interspecies Antigen Sequence	Mouse (75); Rat (74)
Preparation Method	in vitro wheat germ expression system
Purification	Glutathione Sepharose 4 Fast Flow
Quality Control Testing	12.5% SDS-PAGE Stained with Coomassie Blue.
Storage Buffer	50 mM Tris-HCl, 10 mM reduced Glutathione, pH=8.0 in the elution buffer.
Storage Instruction	Store at -80°C. Aliquot to avoid repeated freezing and thawing.
Note	Best use within three months from the date of receipt of this protein.

Applications

- Enzyme-linked Immunoabsorbent Assay
- Western Blot (Recombinant protein)
- Antibody Production
- Protein Array

Gene Info — PPA2

Entrez GeneID [27068](#)

GeneBank Accession# [NM_176869](#)

Protein Accession# [NP_789845](#)

Gene Name PPA2

Gene Alias FLJ20459, HSPC124, MGC49850, SID6-306

Gene Description pyrophosphatase (inorganic) 2

Omim ID [609988](#)

Gene Ontology [Hyperlink](#)

Gene Summary The protein encoded by this gene is localized to the mitochondrion, is highly similar to members of the inorganic pyrophosphatase (PPase) family, and contains the signature sequence essential for the catalytic activity of PPase. PPases catalyze the hydrolysis of pyrophosphate to inorganic phosphate, which is important for the phosphate metabolism of cells. Alternate transcriptional splice variants, encoding different isoforms, have been characterized. [provided by RefSeq]

Other Designations inorganic pyrophosphatase 2

Pathway

- [Oxidative phosphorylation](#)

Disease

- [Alcoholism](#)
- [Genetic Predisposition to Disease](#)
- [Tobacco Use Disorder](#)