

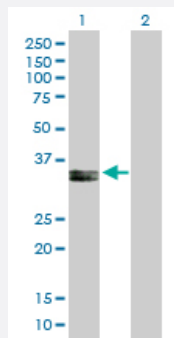
MaxPab®

## PPA2 purified MaxPab mouse polyclonal antibody (B01P)

Catalog # H00027068-B01P

Size 50 ug

### Applications

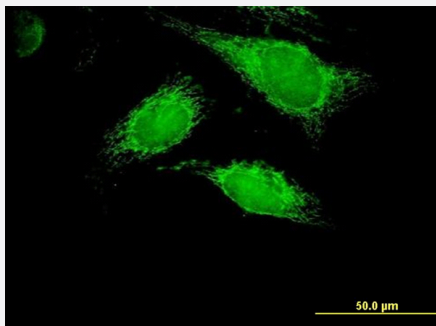


#### Western Blot (Transfected lysate)

Western Blot analysis of PPA2 expression in transfected 293T cell line ([H00027068-T01](#)) by PPA2 MaxPab polyclonal antibody.

Lane 1: PPA2 transfected lysate(36.74 KDa).

Lane 2: Non-transfected lysate.



#### Immunofluorescence

Immunofluorescence of purified MaxPab antibody to PPA2 on HeLa cell. [antibody concentration 10 ug/ml]

### Specification

#### Product Description

Mouse polyclonal antibody raised against a full-length human PPA2 protein.

#### Immunogen

PPA2 (NP\_789845.1, 1 a.a. ~ 334 a.a) full-length human protein.

#### Sequence

MSALLRLLRTGAPAAACLRLLGTSAGTGSRRAMALYHTEERGQPCSQNYRLFFKNVTGHYISPFHDI  
PLKVNSKEENGIPMKKARNDYENLNMIVEIPRWNAKMEIATKEPMNPIKQYVKDGKLRVANIF  
PYKGYWNYGTLPTQWEDPHEKDKSTNCFGDNDPIDVCEIGSKILSCGEVIHVKILGILALIDEGETD  
WKLIAINANDPEASKFHDIDDVKKFKPGYLEATLNWFRLYKVPDGKPENQFAFNGEFKNKAFALE  
VIKSTHQCWKALLMKKCNGGAINCTNVQISDSPFRCTQEEARSLVESVSSSPNKESNEEEQVWH  
FLGK

#### Host

Mouse

Reactivity	Human
Interspecies Antigen Sequence	Mouse (75); Rat (74)
Quality Control Testing	Antibody reactive against mammalian transfected lysate.
Storage Buffer	In 1x PBS, pH 7.4
Storage Instruction	Store at -20°C or lower. Aliquot to avoid repeated freezing and thawing.

## Applications

- Western Blot (Transfected lysate)

Western Blot analysis of PPA2 expression in transfected 293T cell line ([H00027068-T01](#)) by PPA2 MaxPab polyclonal antibody.

Lane 1: PPA2 transfected lysate(36.74 KDa).

Lane 2: Non-transfected lysate.

[Protocol Download](#)

- Immunofluorescence

Immunofluorescence of purified MaxPab antibody to PPA2 on HeLa cell. [antibody concentration 10 ug/ml]

## Gene Info — PPA2

Entrez GeneID	<a href="#">27068</a>
GeneBank Accession#	<a href="#">NM_176869.2</a>
Protein Accession#	<a href="#">NP_789845.1</a>
Gene Name	PPA2
Gene Alias	FLJ20459, HSPC124, MGC49850, SID6-306
Gene Description	pyrophosphatase (inorganic) 2
Omim ID	<a href="#">609988</a>
Gene Ontology	<a href="#">Hyperlink</a>

**Gene Summary**

The protein encoded by this gene is localized to the mitochondrion, is highly similar to members of the inorganic pyrophosphatase (PPase) family, and contains the signature sequence essential for the catalytic activity of PPase. PPases catalyze the hydrolysis of pyrophosphate to inorganic phosphate, which is important for the phosphate metabolism of cells. Alternate transcriptional splice variants, encoding different isoforms, have been characterized. [provided by RefSeq]

**Other Designations**

inorganic pyrophosphatase 2

## Pathway

- [Oxidative phosphorylation](#)

## Disease

- [Alcoholism](#)
- [Genetic Predisposition to Disease](#)
- [Tobacco Use Disorder](#)