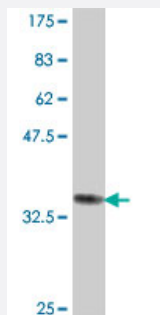


PPA2 polyclonal antibody (A01)

Catalog # H00027068-A01

Size 50 uL

Applications



Western Blot detection against Immunogen (36.01 KDa) .

Specification

Product Description	Mouse polyclonal antibody raised against a partial recombinant PPA2.
Immunogen	PPA2 (NP_789845, 1 a.a. ~ 90 a.a) partial recombinant protein with GST tag.
Sequence	MSALLRLLRTGAPAAACLRLGTSAGTGSRRAMALYHTEERGQPCSQNYRLFFKNVTGHYISPFHDI PLKVNSKEENGIPMKKARNDYEN
Host	Mouse
Reactivity	Human
Interspecies Antigen Sequence	Mouse (75); Rat (74)
Quality Control Testing	Antibody Reactive Against Recombinant Protein. Western Blot detection against Immunogen (36.01 KDa) .
Storage Buffer	50 % glycerol
Storage Instruction	Store at -20°C or lower. Aliquot to avoid repeated freezing and thawing.

Applications

- Western Blot (Recombinant protein)

[Protocol Download](#)

- ELISA

Gene Info — PPA2

Entrez GeneID [27068](#)

GeneBank Accession# [NM_176869](#)

Protein Accession# [NP_789845](#)

Gene Name PPA2

Gene Alias FLJ20459, HSPC124, MGC49850, SID6-306

Gene Description pyrophosphatase (inorganic) 2

Omim ID [609988](#)

Gene Ontology [Hyperlink](#)

Gene Summary The protein encoded by this gene is localized to the mitochondrion, is highly similar to members of the inorganic pyrophosphatase (PPase) family, and contains the signature sequence essential for the catalytic activity of PPase. PPases catalyze the hydrolysis of pyrophosphate to inorganic phosphate, which is important for the phosphate metabolism of cells. Alternate transcriptional splice variants, encoding different isoforms, have been characterized. [provided by RefSeq]

Other Designations inorganic pyrophosphatase 2

Pathway

- [Oxidative phosphorylation](#)

Disease

- [Alcoholism](#)
- [Genetic Predisposition to Disease](#)
- [Tobacco Use Disorder](#)