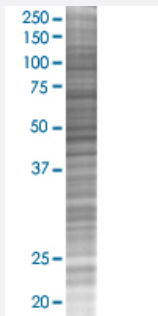


STAU2 293T Cell Transient Overexpression Lysate(Denatured)

Catalog # H00027067-T02

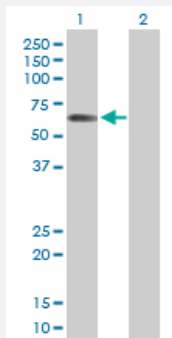
Size 100 uL

Applications



SDS-PAGE Gel

STAU2 transfected lysate.



Western Blot

Lane 1: STAU2 transfected lysate (52.80 KDa)

Lane 2: Non-transfected lysate.

Specification

Transfected Cell Line	293T
Plasmid	pCMV-STAU2 full-length
Host	Human
Theoretical MW (kDa)	52.8
Interspecies Antigen Sequence	Mouse (95); Rat (94)

Quality Control Testing

Transient overexpression cell lysate was tested with Anti-STAU2 antibody ([H00027067-D01P](#)) by Western Blots.
SDS-PAGE Gel
STAU2 transfected lysate.
Western Blot
Lane 1: STAU2 transfected lysate (52.80 KDa)
Lane 2: Non-transfected lysate.

Storage Buffer

1X Sample Buffer (50 mM Tris-HCl, 2% SDS, 10% glycerol, 300 mM 2-mercaptoethanol, 0.01% Bromophenol blue)

Storage Instruction

Store at -80°C. Aliquot to avoid repeated freezing and thawing.

Applications

- Western Blot

Gene Info — STAU2

Entrez GeneID

[27067](#)

GeneBank Accession#

[NM_014393.1](#)

Protein Accession#

[NP_055208.1](#)

Gene Name

STAU2

Gene Alias

39K2, 39K3, DKFZp781K0371, MGC119606

Gene Description

stau2, RNA binding protein, homolog 2 (Drosophila)

Omim ID

[605920](#)

Gene Ontology

[Hyperlink](#)

Gene Summary

Staufen homolog 2 is a member of the family of double-stranded RNA (dsRNA)-binding proteins involved in the transport and/or localization of mRNAs to different subcellular compartments and/or organelles. These proteins are characterized by the presence of multiple dsRNA-binding domains which are required to bind RNAs having double-stranded secondary structures. Staufen homolog 2 shares 48.5% and 59.9% similarity with drosophila and human staufen, respectively. The exact function of Staufen homolog 2 is not known, but since it contains 3 copies of conserved dsRNA binding domain, it could be involved in double-stranded RNA binding events. Several transcript variants encoding different isoforms have been found for this gene. [provided by RefSeq]

Other Designations

stau2 homolog 2