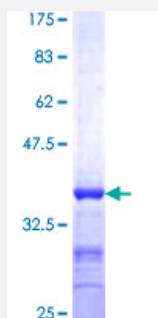


# STAU2 (Human) Recombinant Protein (Q01)

Catalog # H00027067-Q01

Size 25 ug, 10 ug

## Applications



## Specification

<b>Product Description</b>	Human STAU2 partial ORF ( NP_055208, 2 a.a. - 90 a.a.) recombinant protein with GST-tag at N-terminal.
<b>Sequence</b>	LQINQMFSVQLSLGEQTWESEGSSIKKAQQAVANKALTESTLPKPVQKPPKSNVNNNPGSITPTVELNGLAMKRGEPAYRPLDPKPF
<b>Host</b>	Wheat Germ (in vitro)
<b>Theoretical MW (kDa)</b>	35.53
<b>Interspecies Antigen Sequence</b>	Mouse (95); Rat (94)
<b>Preparation Method</b>	<a href="#">in vitro wheat germ expression system</a>
<b>Purification</b>	Glutathione Sepharose 4 Fast Flow
<b>Quality Control Testing</b>	12.5% SDS-PAGE Stained with Coomassie Blue.
<b>Storage Buffer</b>	50 mM Tris-HCl, 10 mM reduced Glutathione, pH=8.0 in the elution buffer.
<b>Storage Instruction</b>	Store at -80°C. Aliquot to avoid repeated freezing and thawing.
<b>Note</b>	Best use within three months from the date of receipt of this protein.

## Applications

- Enzyme-linked Immunoabsorbent Assay
- Western Blot (Recombinant protein)
- Antibody Production
- Protein Array

## Gene Info — STAU2

Entrez GeneID [27067](#)

GeneBank Accession# [NM\\_014393](#)

Protein Accession# [NP\\_055208](#)

Gene Name STAU2

Gene Alias 39K2, 39K3, DKFZp781K0371, MGC119606

Gene Description staufen, RNA binding protein, homolog 2 (Drosophila)

Omim ID [605920](#)

Gene Ontology [Hyperlink](#)

**Gene Summary** Staufen homolog 2 is a member of the family of double-stranded RNA (dsRNA)-binding proteins involved in the transport and/or localization of mRNAs to different subcellular compartments and/or organelles. These proteins are characterized by the presence of multiple dsRNA-binding domains which are required to bind RNAs having double-stranded secondary structures. Staufen homolog 2 shares 48.5% and 59.9% similarity with drosophila and human staufen, respectively. The exact function of Staufen homolog 2 is not known, but since it contains 3 copies of conserved dsRNA binding domain, it could be involved in double-stranded RNA binding events. Several transcript variants encoding different isoforms have been found for this gene. [provided by RefSeq]

**Other Designations** staufen homolog 2