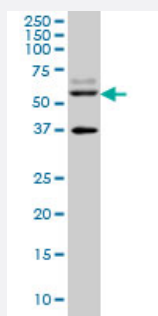


# STAU2 monoclonal antibody (M09), clone 3E9

Catalog # H00027067-M09

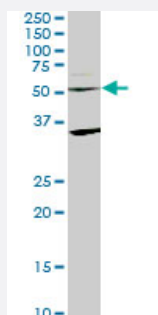
Size 100 ug

## Applications



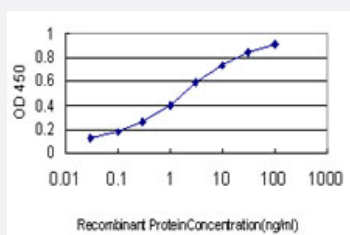
### Western Blot (Cell lysate)

STAU2 monoclonal antibody (M09), clone 3E9 Western Blot analysis of STAU2 expression in IMR-32 ( Cat # L008V1 ).



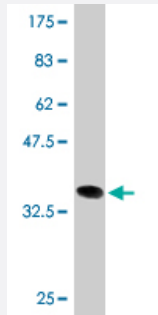
### Western Blot (Cell lysate)

STAU2 monoclonal antibody (M09), clone 3E9. Western Blot analysis of STAU2 expression in C32 ( Cat # L002V1 ).



### Sandwich ELISA (Recombinant protein)

Detection limit for recombinant GST tagged STAU2 is approximately 0.03ng/ml as a capture antibody.



Western Blot detection against Immunogen (35.53 KDa) .

## Specification

<b>Product Description</b>	Mouse monoclonal antibody raised against a partial recombinant STAU2.
<b>Immunogen</b>	STAU2 (NP_055208, 2 a.a. ~ 90 a.a) partial recombinant protein with GST tag. MW of the GST tag alone is 26 KDa.
<b>Sequence</b>	LQINQMFSVQLSLGEQTWESEGSSIKKAQQAVANKALTESTLPKPVQKPPKSNVNNPGSITPTV ELNGLAMKRGEPAYRPLDPKFPF
<b>Host</b>	Mouse
<b>Reactivity</b>	Human
<b>Interspecies Antigen Sequence</b>	Mouse (95); Rat (94)
<b>Isotype</b>	IgG1 Kappa
<b>Quality Control Testing</b>	Antibody Reactive Against Recombinant Protein. Western Blot detection against Immunogen (35.53 KDa) .
<b>Storage Buffer</b>	In 1x PBS, pH 7.4
<b>Storage Instruction</b>	Store at -20°C or lower. Aliquot to avoid repeated freezing and thawing.

## Applications

- Western Blot (Cell lysate)

STAU2 monoclonal antibody (M09), clone 3E9 Western Blot analysis of STAU2 expression in IMR-32 ( Cat # L008V1 ).

[Protocol Download](#)

- Western Blot (Cell lysate)

STAU2 monoclonal antibody (M09), clone 3E9. Western Blot analysis of STAU2 expression in C32 ( Cat # L002V1 ).

[Protocol Download](#)

- Western Blot (Recombinant protein)

[Protocol Download](#)

- Sandwich ELISA (Recombinant protein)

Detection limit for recombinant GST tagged STAU2 is approximately 0.03ng/ml as a capture antibody.

[Protocol Download](#)

- ELISA

## Gene Info — STAU2

Entrez GeneID [27067](#)

GeneBank Accession# [NM\\_014393](#)

Protein Accession# [NP\\_055208](#)

Gene Name STAU2

Gene Alias 39K2, 39K3, DKFZp781K0371, MGC119606

Gene Description stau2, RNA binding protein, homolog 2 (Drosophila)

Omim ID [605920](#)

Gene Ontology [Hyperlink](#)

**Gene Summary** Stau2 homolog 2 is a member of the family of double-stranded RNA (dsRNA)-binding proteins involved in the transport and/or localization of mRNAs to different subcellular compartments and/or organelles. These proteins are characterized by the presence of multiple dsRNA-binding domains which are required to bind RNAs having double-stranded secondary structures. Stau2 homolog 2 shares 48.5% and 59.9% similarity with drosophila and human stau2, respectively. The exact function of Stau2 homolog 2 is not known, but since it contains 3 copies of conserved dsRNA binding domain, it could be involved in double-stranded RNA binding events. Several transcript variants encoding different isoforms have been found for this gene. [provided by RefSeq]

**Other Designations** stau2 homolog 2